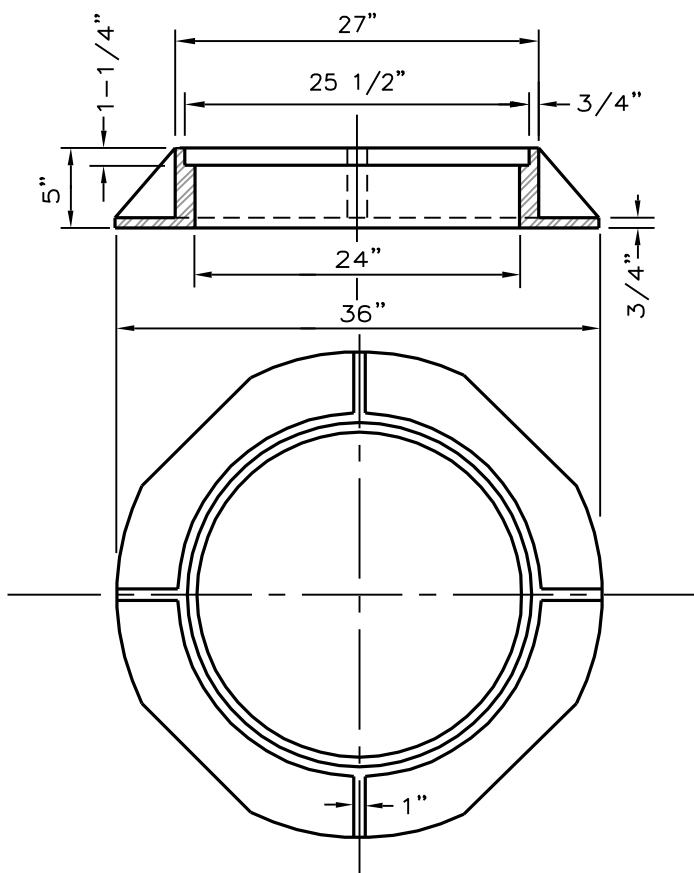


MANHOLE COVER

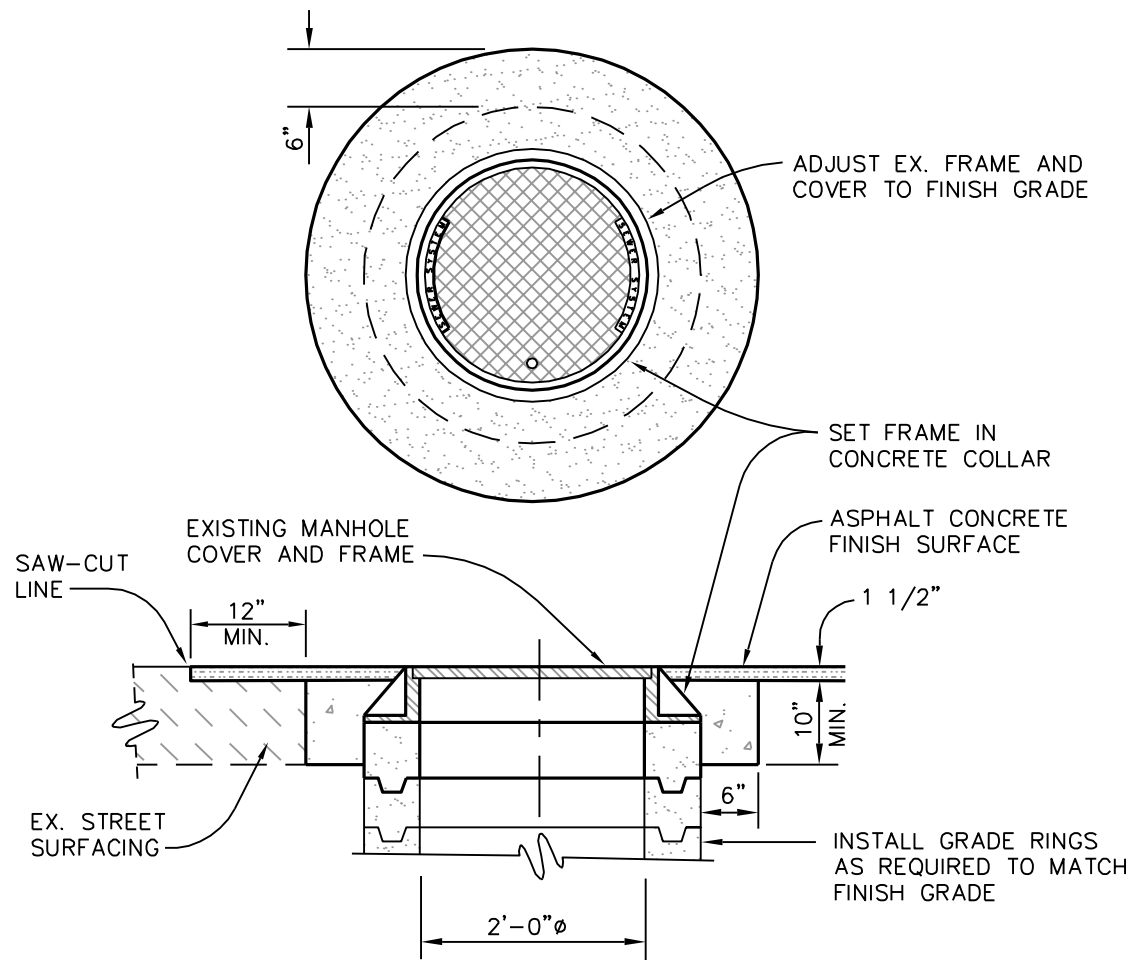


MANHOLE FRAME

MANHOLE FRAME & COVER SHALL BE SOUTH BAY FOUNDRY A 62, SBF 1000 OR APPROVED EQUAL.

SET WEIGHT	
COVER-	155 LBS.
FRAME-	165 LBS
TOTAL	320 LBS.

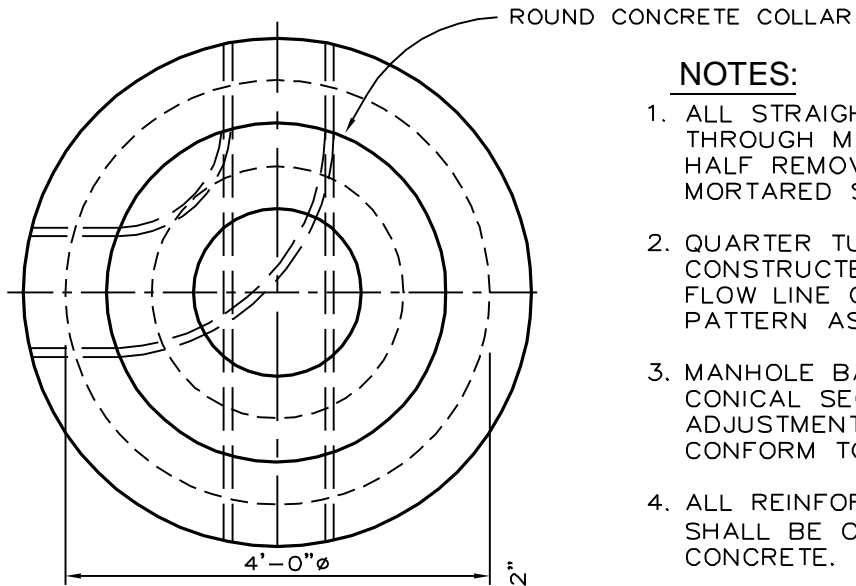
REVISION DATE	CITY OF MENDOTA	STD.DWG.
9-25-07	MANHOLE FRAME & COVER	S-1



NOTES:

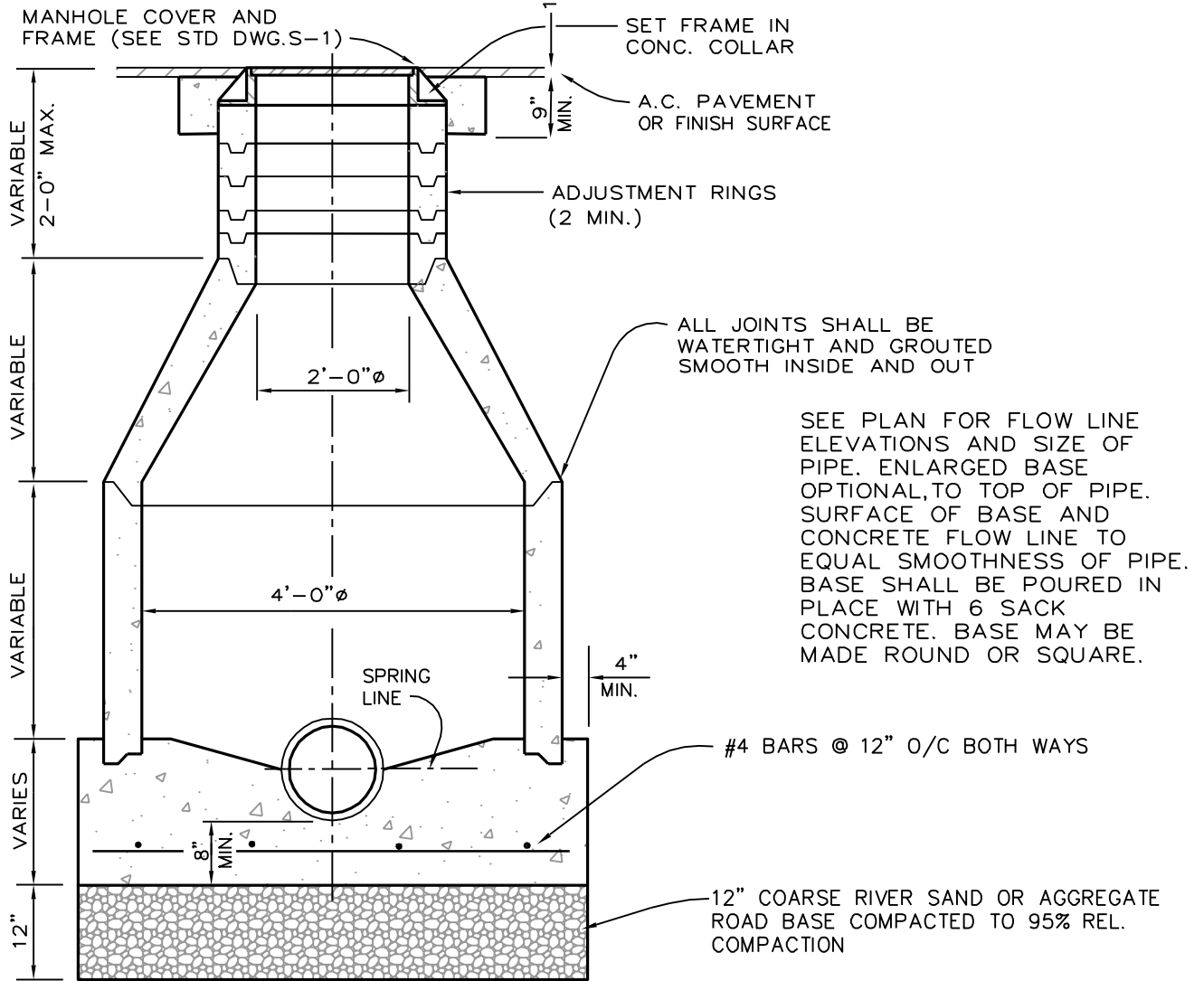
1. REMOVE EXISTING CONCRETE COLLAR IF ANY.
2. ADJUST EXISTING MANHOLE FRAME AND COVER TO FINISH GRADE AFTER PAVING IS COMPLETED.
3. CONSTRUCT CONCRETE COLLAR AS REQUIRED OR AS DIRECTED BY THE ENGINEER.
4. ALL CONSTRUCTION SHALL BE 6 SACK CONCRETE.

REVISION DATE	CITY OF MENDOTA	Std. Dwg.
	MANHOLE GRADE ADJUSTMENT	S-1A

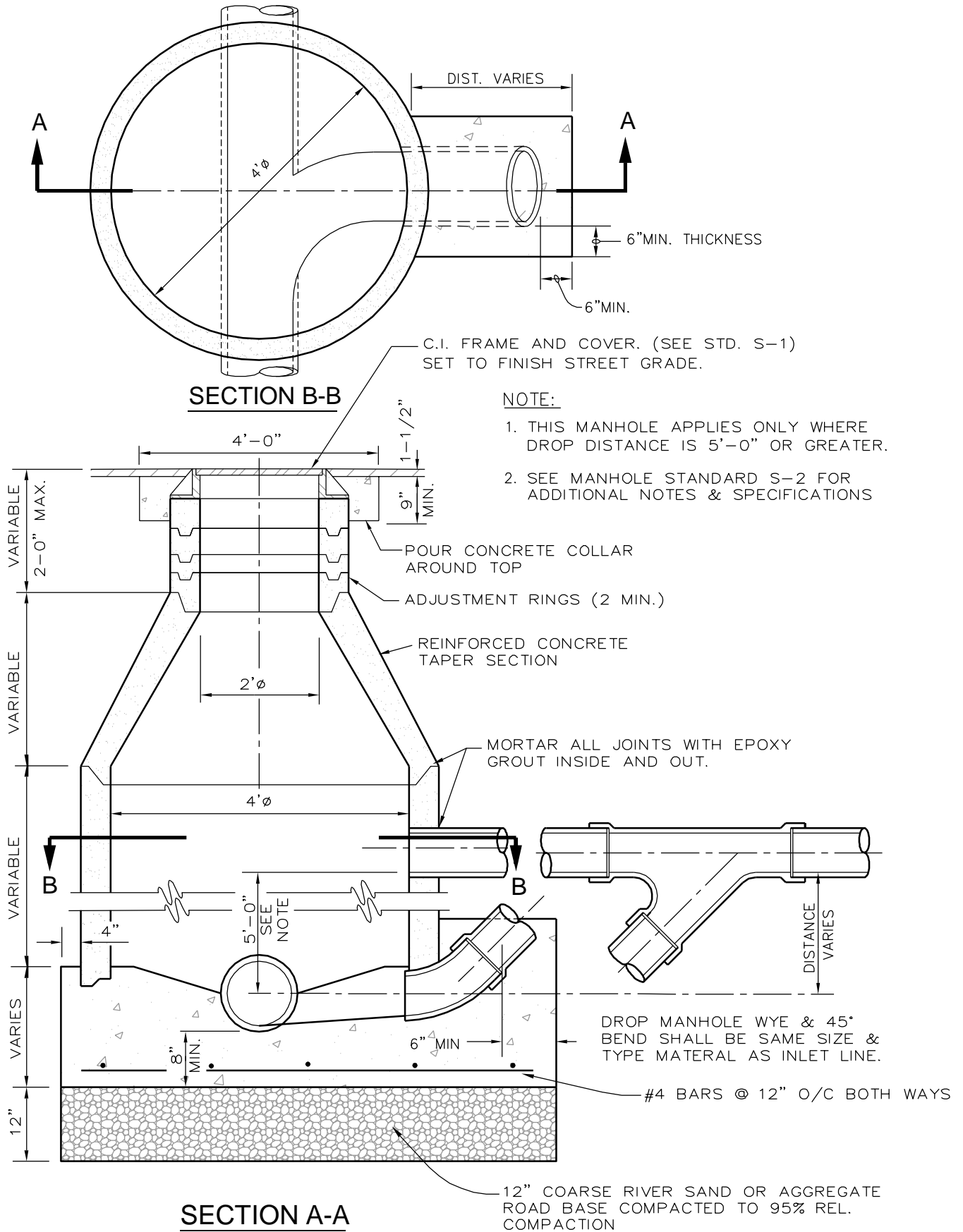


NOTES:

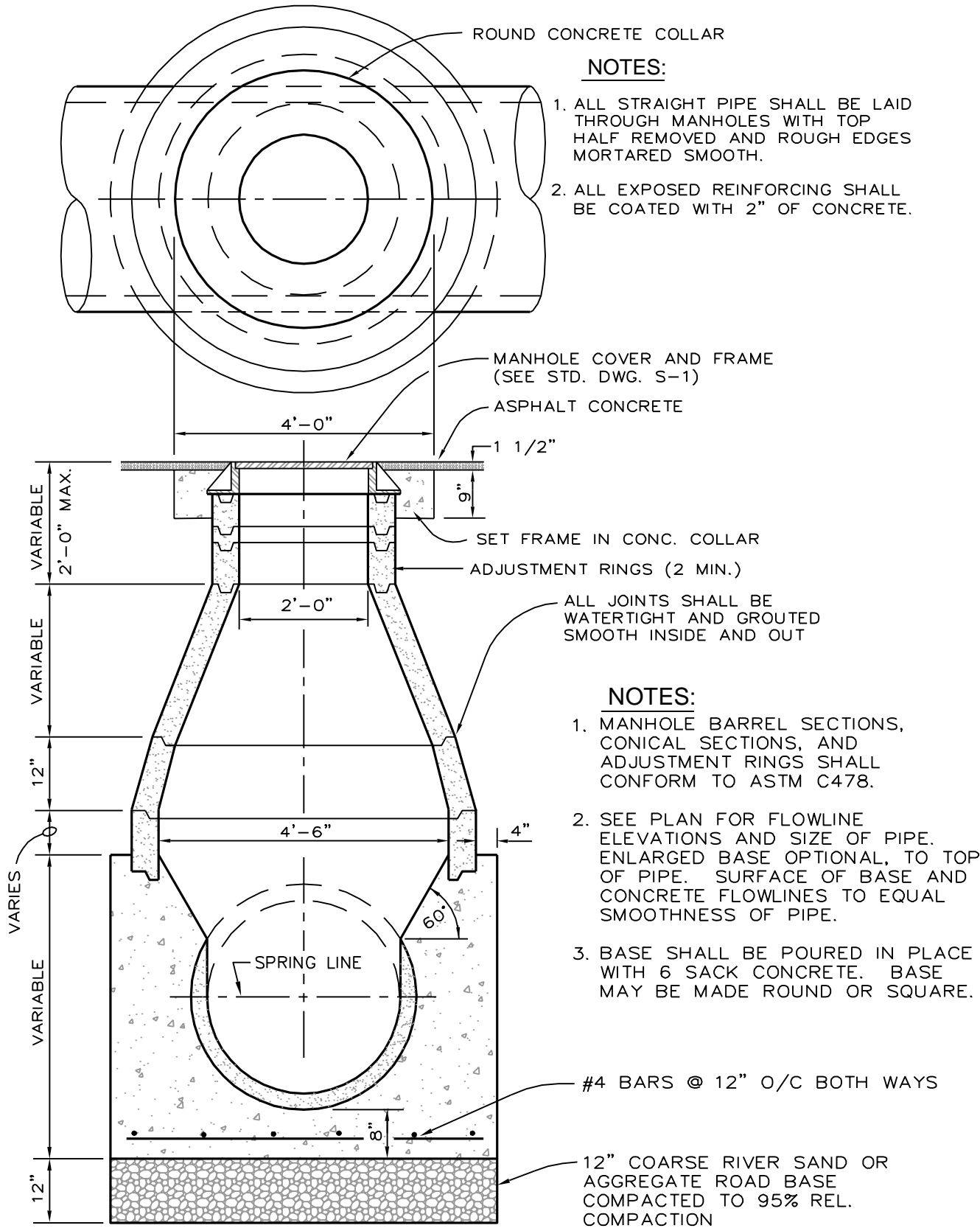
1. ALL STRAIGHT PIPE SHALL BE LAID THROUGH MANHOLES WITH TOP HALF REMOVED AND ROUGH EDGES MORTARED SMOOTH.
2. QUARTER TURNS SHALL BE CONSTRUCTED TO FORM A SMOOTH FLOW LINE OF SAME SHAPE AND PATTERN AS BOTTOM OF PIPE.
3. MANHOLE BARREL SECTIONS, CONICAL SECTIONS, AND ADJUSTMENT RINGS SHALL CONFORM TO ASTM C478.
4. ALL REINFORCING STEEL EXPOSED SHALL BE COATED WITH 2" OF CONCRETE.



REVISION DATE		CITY OF MENDOTA	STD. DWG.
9-25-07			S-2
		48" MANHOLE	



REVISION DATE		CITY OF MENDOTA	STD. DWG.
9-25-07			
		48" DROP MANHOLE	S-3



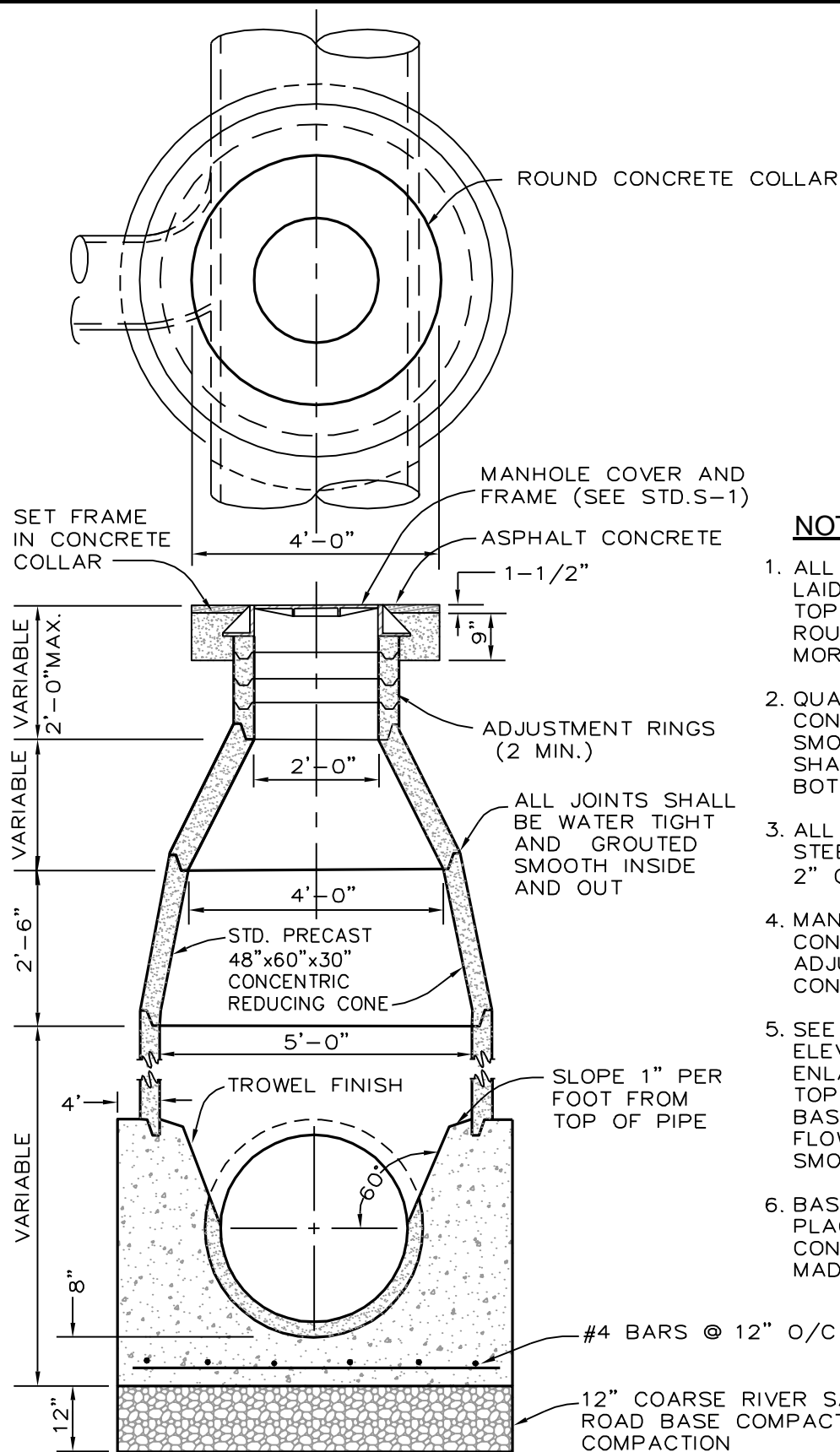
NOTES:

1. ALL STRAIGHT PIPE SHALL BE LAID THROUGH MANHOLES WITH TOP HALF REMOVED AND ROUGH EDGES MORTARED SMOOTH.
2. ALL EXPOSED REINFORCING SHALL BE COATED WITH 2" OF CONCRETE.

NOTES:

1. MANHOLE BARREL SECTIONS, CONICAL SECTIONS, AND ADJUSTMENT RINGS SHALL CONFORM TO ASTM C478.
2. SEE PLAN FOR FLOWLINE ELEVATIONS AND SIZE OF PIPE. ENLARGED BASE OPTIONAL, TO TOP OF PIPE. SURFACE OF BASE AND CONCRETE FLOWLINES TO EQUAL SMOOTHNESS OF PIPE.
3. BASE SHALL BE POURED IN PLACE WITH 6 SACK CONCRETE. BASE MAY BE MADE ROUND OR SQUARE.

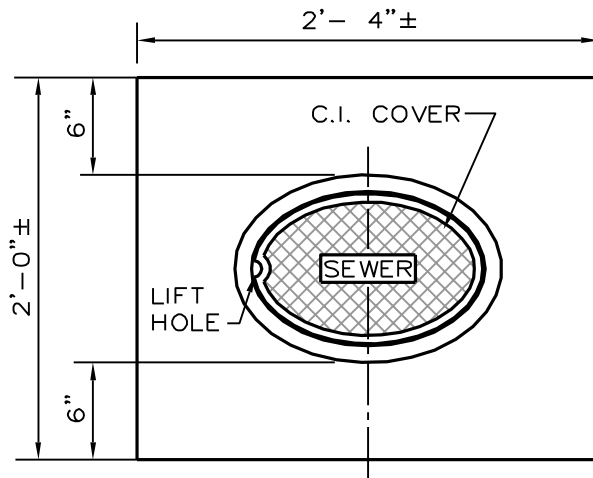
REVISION DATE	CITY OF MENDOTA		STD.DWG.
9-25-07	54" MANHOLE		S-4



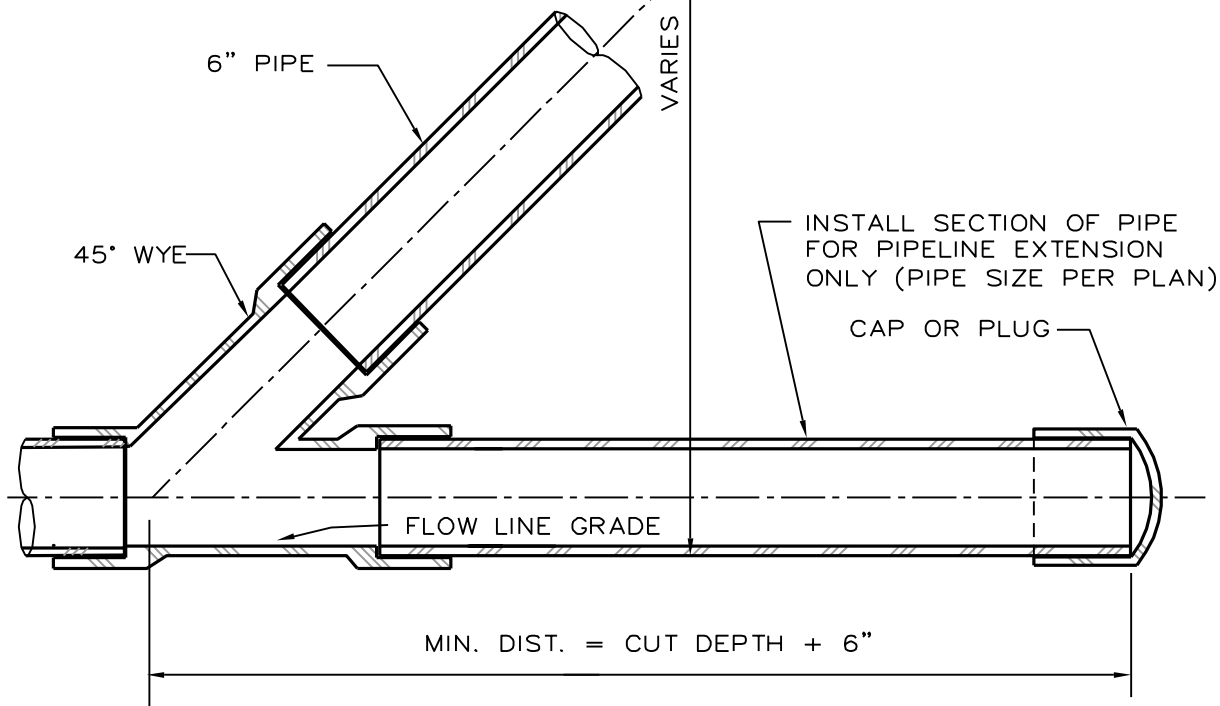
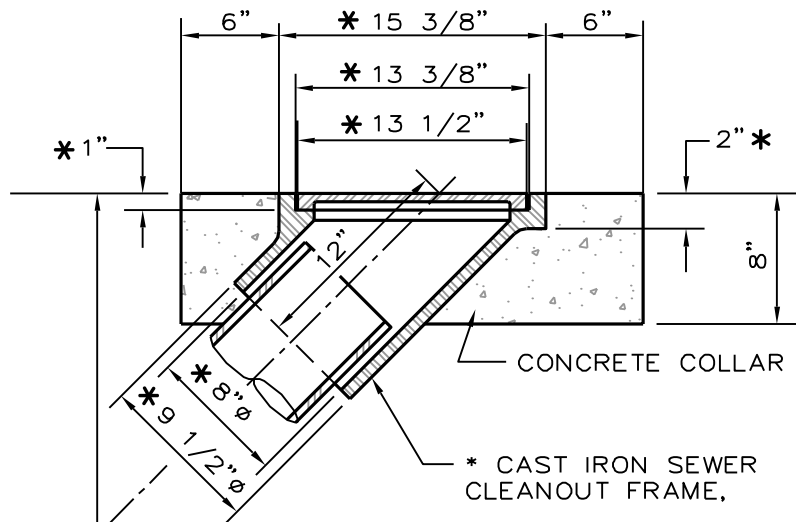
NOTES:

1. ALL STRAIGHT PIPE SHALL BE LAID THROUGH MANHOLES WITH TOP HALF REMOVED AND ROUGH BROKEN EDGES MORTARED SMOOTH.
2. QUARTER TURNS SHALL BE CONSTRUCTED TO FORM A SMOOTH FLOW LINE OF SAME SHAPE AND PATTERN AS BOTTOM OF PIPE.
3. ALL EXPOSED REINFORCING STEEL SHALL BE COATED WITH 2" OF CONCRETE.
4. MANHOLE BARREL SECTIONS, CONICAL SECTIONS, AND ADJUSTMENT RINGS SHALL CONFORM TO ASTM C478.
5. SEE PLAN FOR FLOWLINE ELEVATIONS AND PIPE SIZE. ENLARGED BASE OPTIONAL TO TOP OF PIPE. SURFACE OF BASE AND CONCRETE FLOWLINES TO EQUAL SMOOTHNESS OF PIPE.
6. BASE SHALL BE POURED IN PLACE WITH 6 SACK CONCRETE. BASE MAY BE MADE ROUND OR SQUARE.

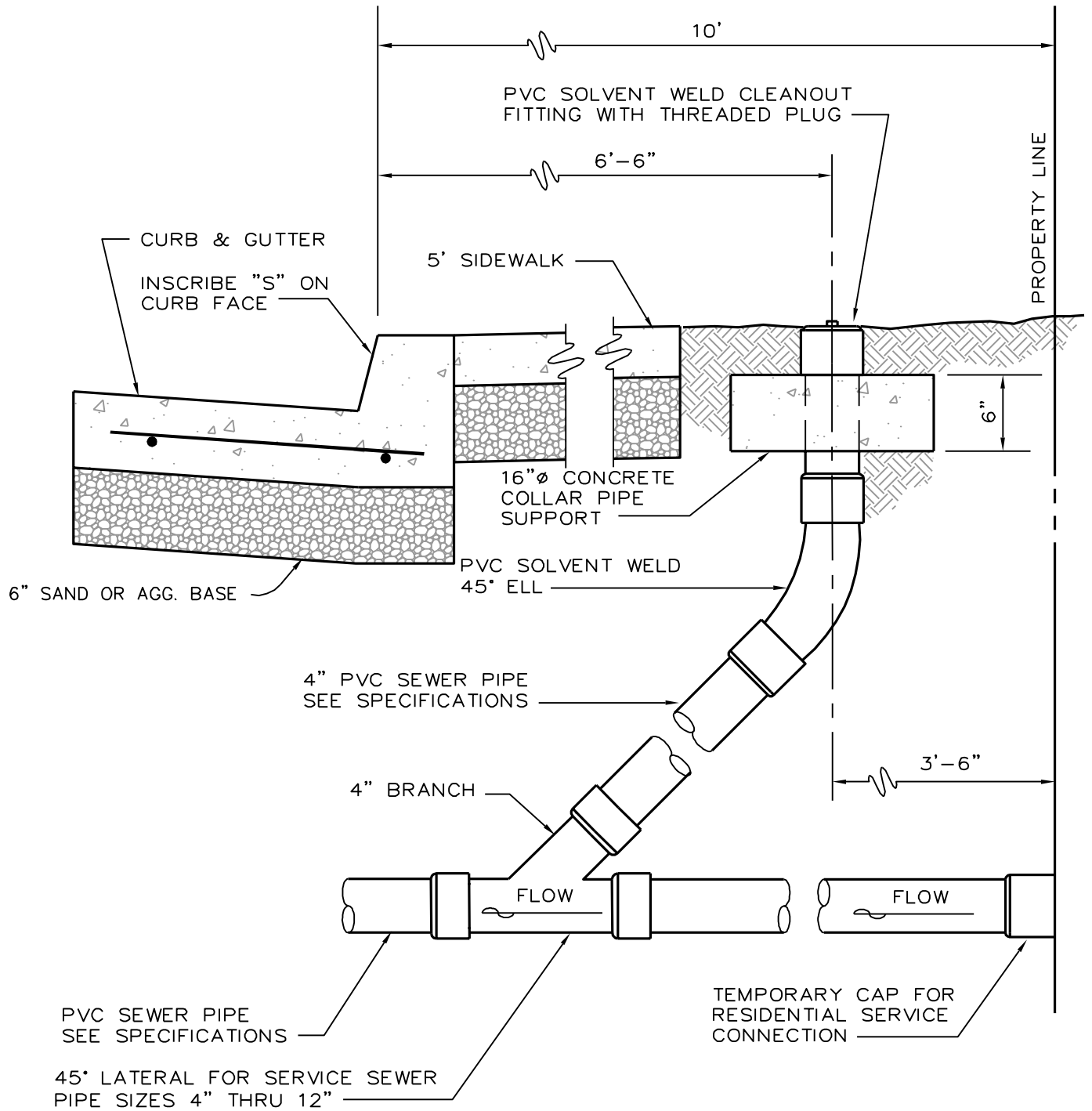
REVISION DATE		CITY OF MENDOTA	Std. Dwg.
5-13-96			60" MANHOLE
9-25-07			



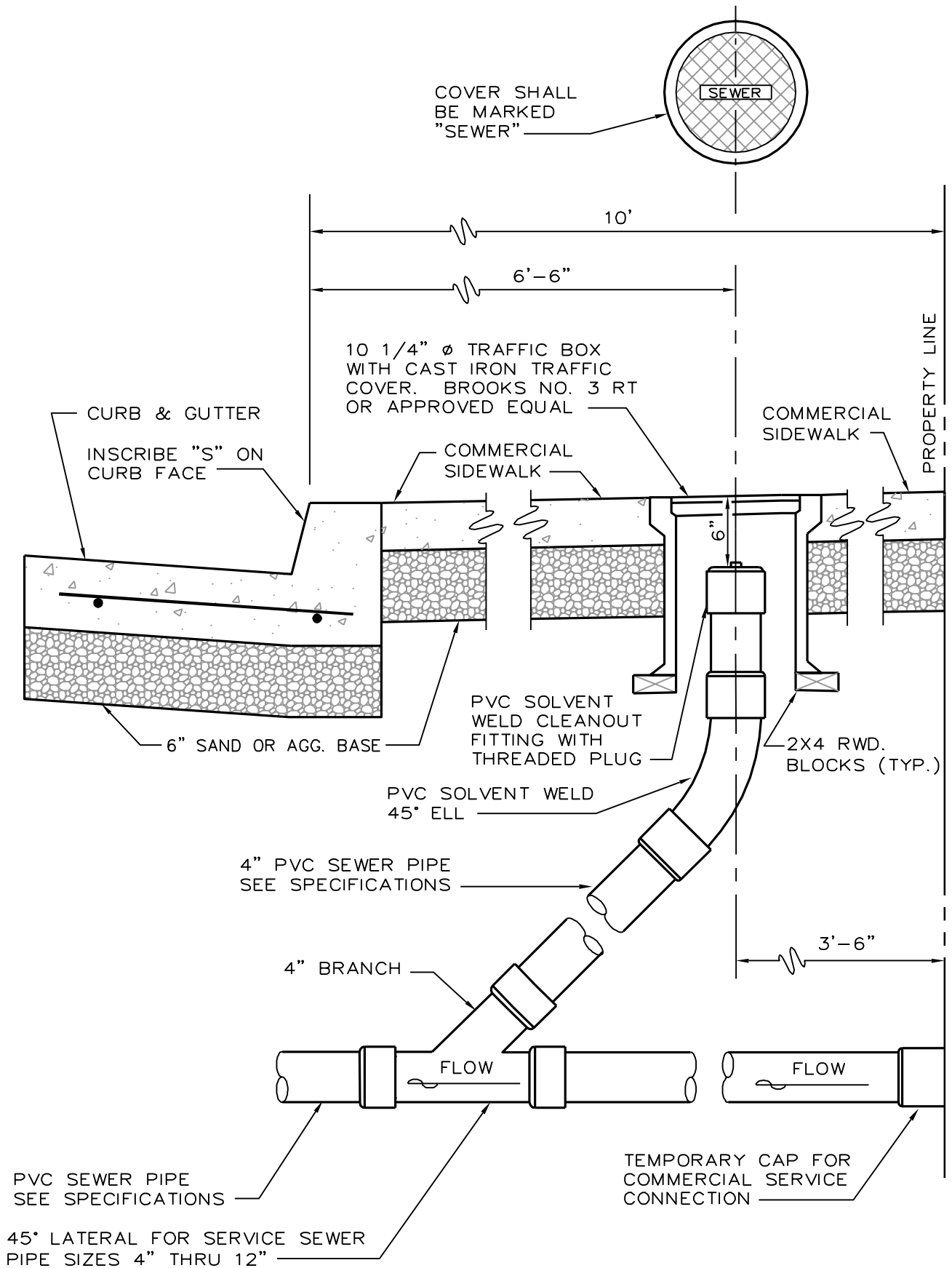
* DIMENSIONS VARY PER MANUFACTURER. SOUTH BAY FOUNDRY, SBF 1247 OR AN APPROVED EQUAL. (209) 367-1940



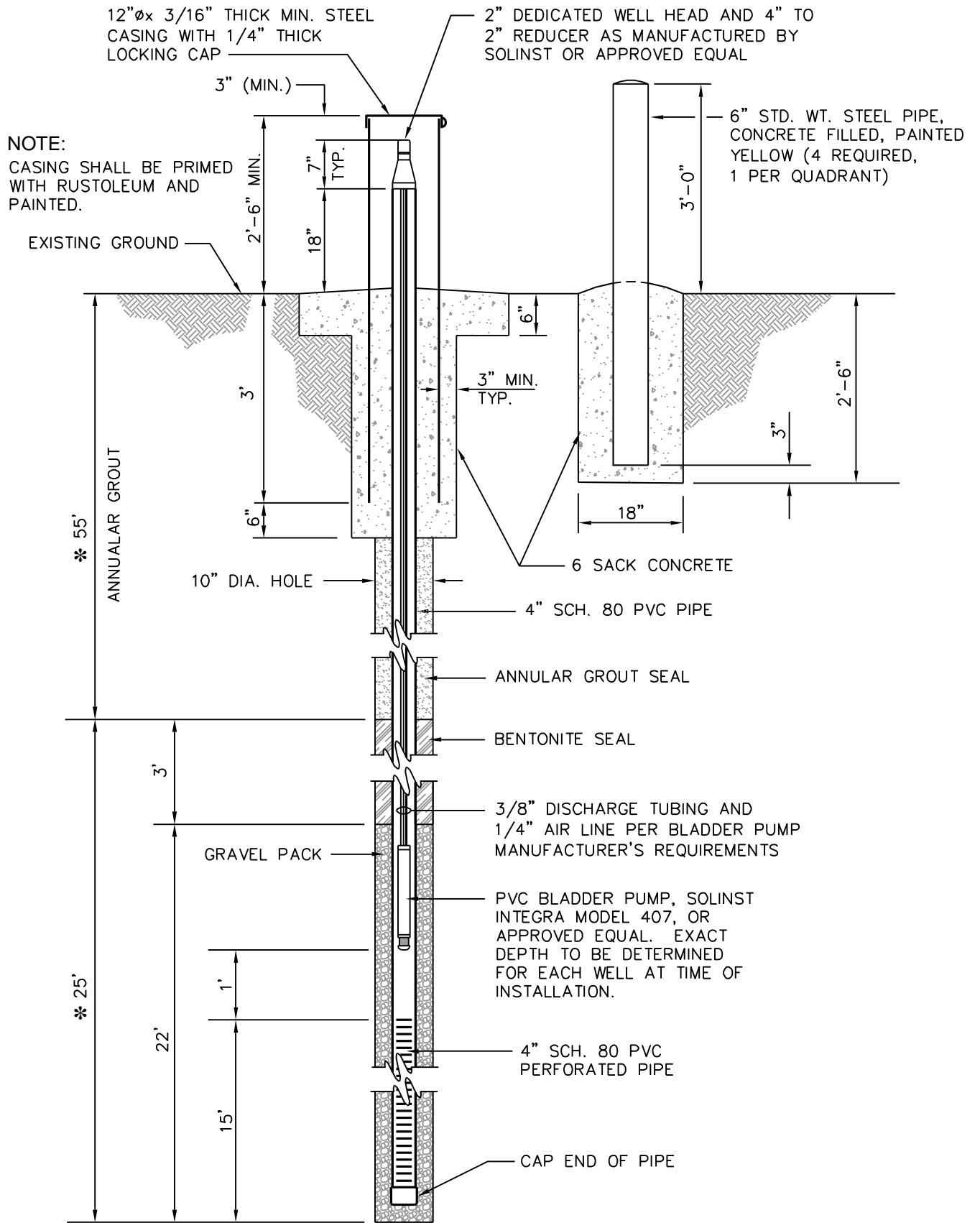
REVISION DATE	CITY OF MENDOTA	STD. DWG.
	SLOPING LAMPHOLE WITH CAST IRON CLEANOUT AND COVER	S-6



REVISION DATE	CITY OF MENDOTA	Std. Dwg.
	RESIDENTIAL SERVICE	S-7A
	SEWER CLEANOUT	

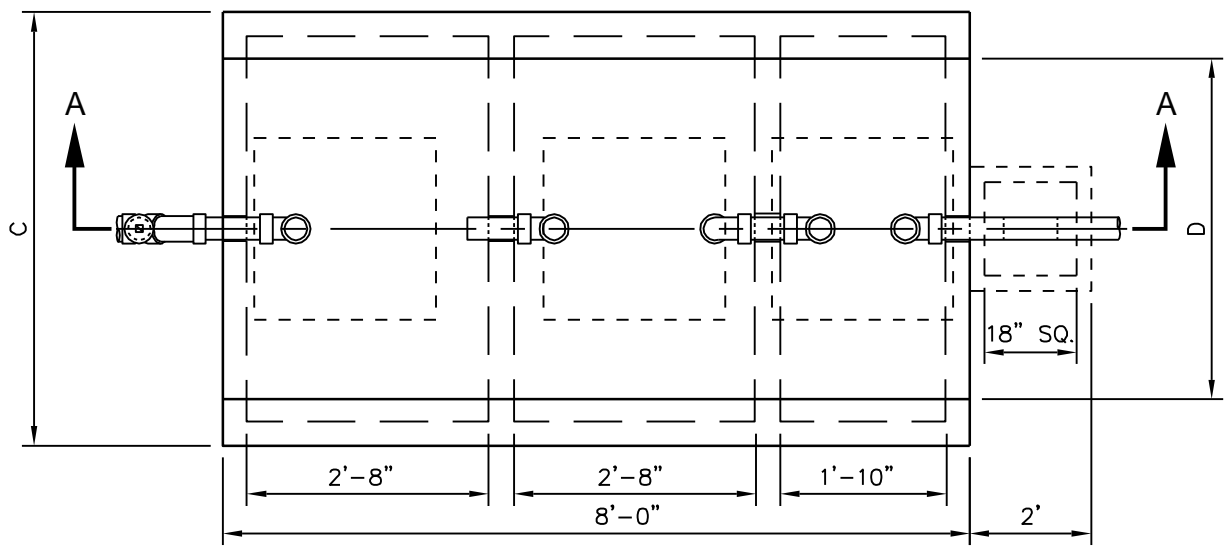


REVISION DATE	CITY OF MENDOTA	Std. Dwg.
	COMMERCIAL SERVICE	S-7B
	SEWER CLEANOUT	

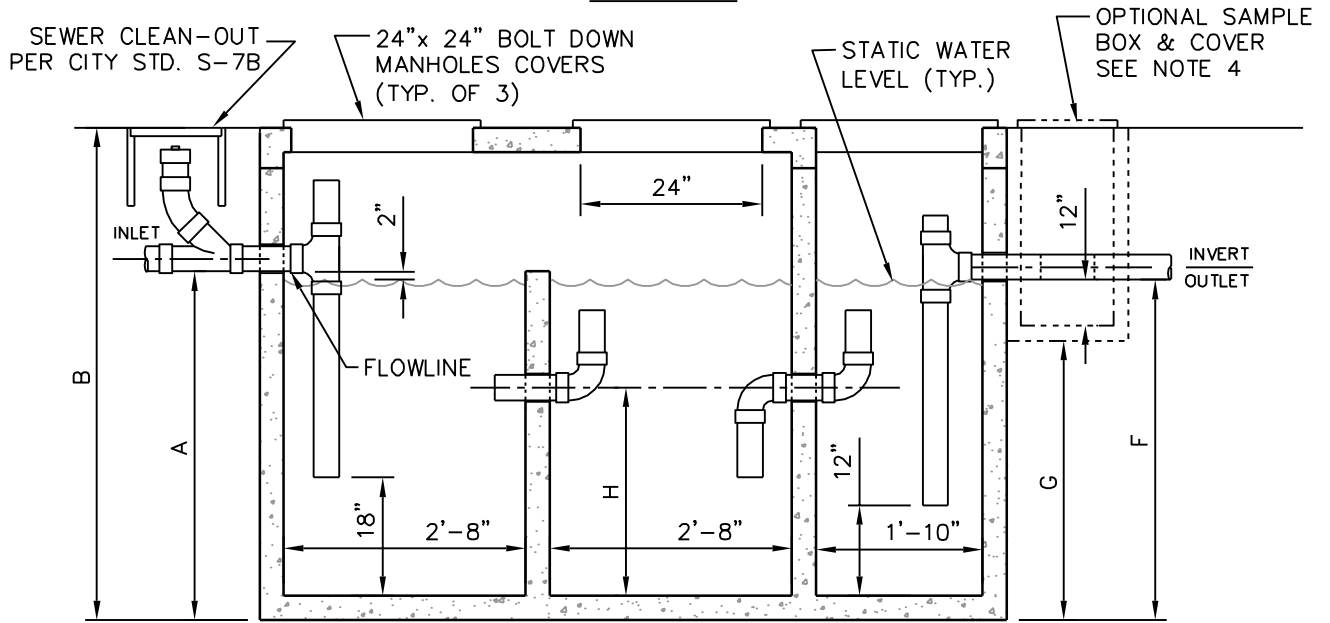


* VARIES PER RESULTS OF SOILS REPORT.

REVISION DATE		CITY OF MENDOTA	STD.DWG.
9-25-07			MONITORING WELL



PLAN VIEW



*E NOT SHOWN ON DRAWING

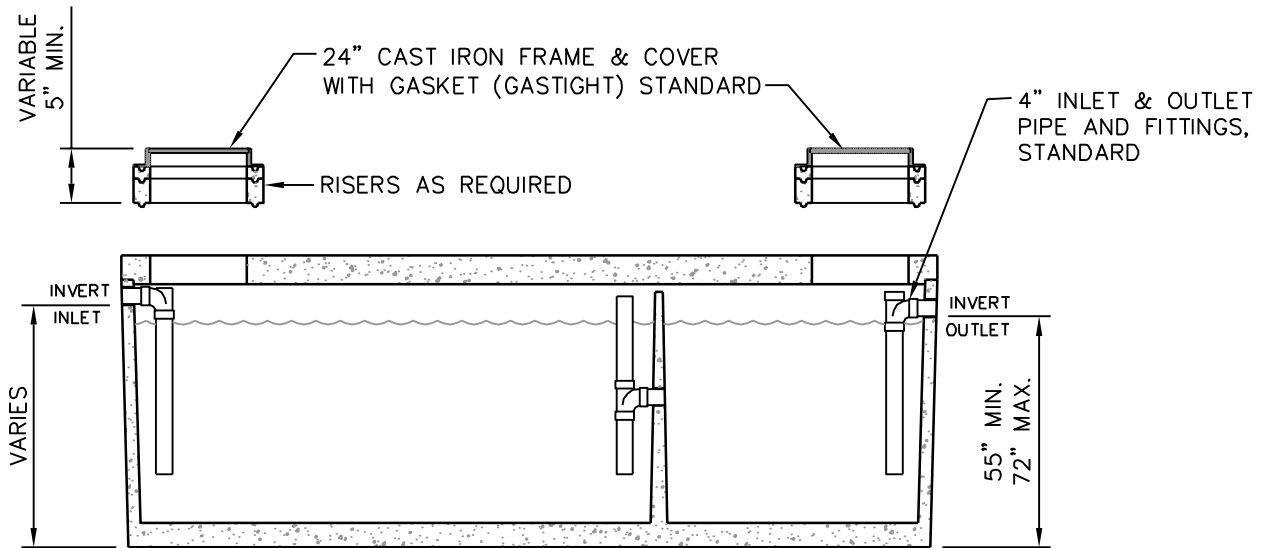
SECTION A - A

	CAPACITY IN GALLONS	A	B	C	D	*E	F	G	H
MODEL NO. NC12003S	1200	5'-0"	6'-0"	5'-11"	4'-3"	3'-11"	4'-10"	3'-7"	
MODEL NO. NC15003S	1500	5'-0"	6'-0"	7'-11"	5'-3"	4'-11"	4'-10"	3'-7"	

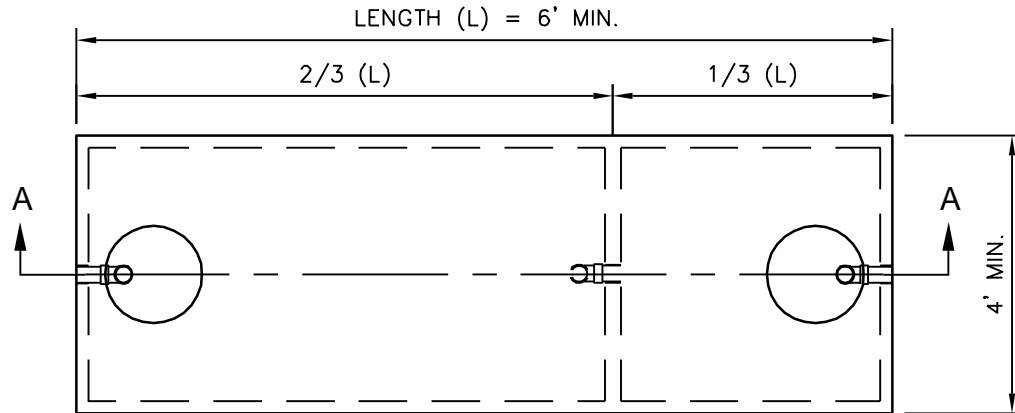
NOTES:

1. A PARTIAL LIST OF AREAS WHERE SAND INTERCEPTORS MAY BE REQUIRED INCLUDES INDUSTRIAL PLANTS, STEAM CLEANING PLANTS, SERVICE STATIONS, AND CAR WASHES.
2. PRE CAST SAND INTERCEPTORS SHALL BE 'CHAPIN PRE-CAST', SALINAS, CA. (831) 630-1042 MODEL NO. NC12003S OR NC15003S, OR APPROVED EQUAL.
3. UNITS INSTALLED IN TRAVELED WAY SHALL BE DESIGNED FOR H-20 TRAFFIC LOADING, BOX AND COVER.
4. OPTIONAL SAMPLE BOX MAY BE REQUIRED BY CITY ENGINEER OR MAY BE INSTALLED AT OWENERS DISCRESSION.

REVISION DATE		CITY OF MENDOTA		Std. Dwg.
9-25-07		SAND AND OIL INTERCEPTOR		S-9
DRAFT				



SECTION A-A



TOP VIEW

NOTES:

1. REQUIRED SIZE OF GREASE INTERCEPTOR SHALL BE DETERMINED BY APPENDIX H OF THE UNIFORM PLUMBING CODE, CURRENT EDITION. THE MINIMUM ALLOWABLE LIQUID VOLUME 500 GALLONS.
2. UNITS INSTALLED IN TRAVELED WAY SHALL BE DESIGNED FOR H-20 TRAFFIC LOADING.

REVISION DATE		CITY OF MENDOTA	STD. DWG.
9-25-07			S-10
		GREASE INTERCEPTOR	