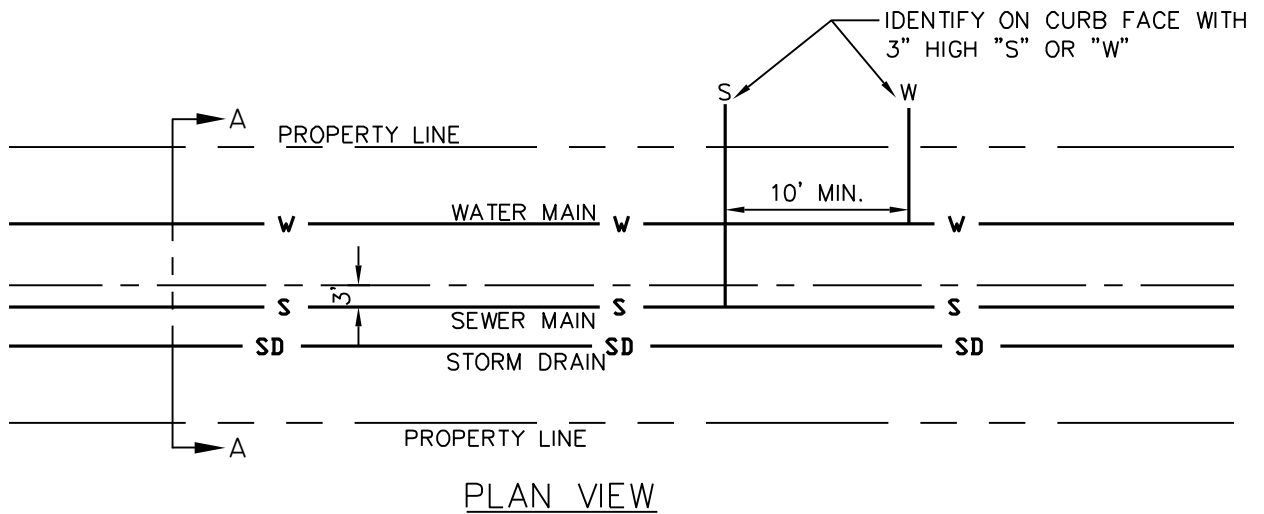


STREET CROSS SECTION A-A

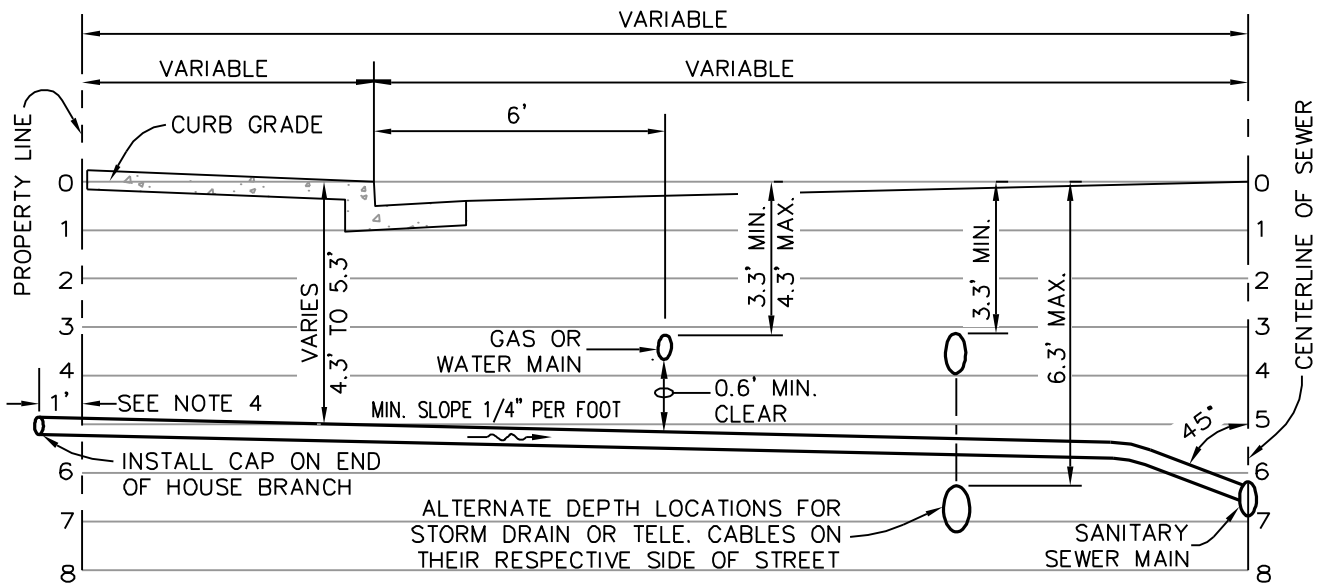


PLAN VIEW

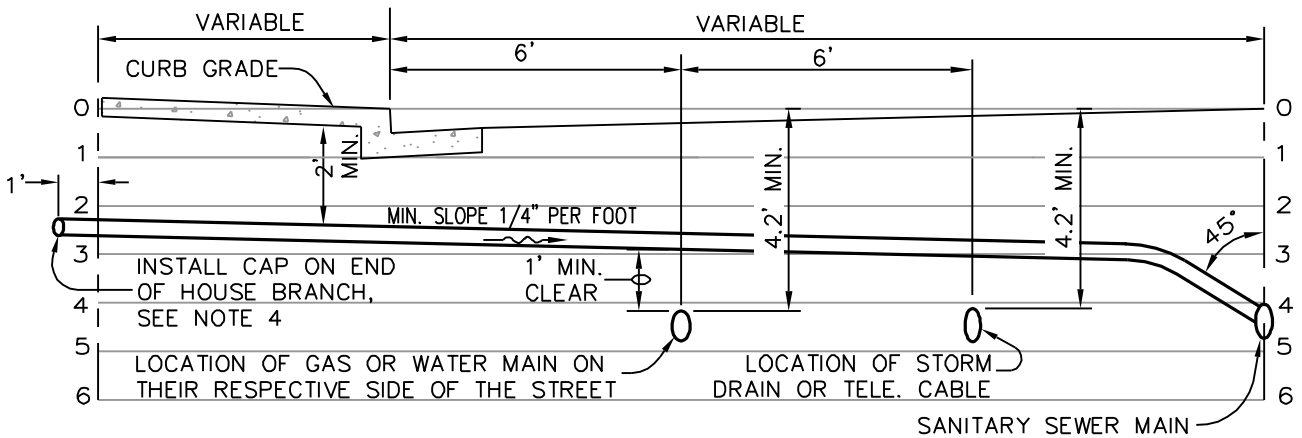
NOTES:

1. STORM DRAINS SHALL BE PLACED ON THE SAME SIDE OF THE STREET WITH THE SEWER MAINS.
2. WATER MAINS SHALL NOT BE PLACED ON THE SAME SIDE OF THE STREET WITH SEWER MAINS.
3. SEWER MAINS SHALL BE PLACED THREE (3) FEET SOUTH OR EAST OF THE CENTER LINE OF THE STREET.
4. ALL SEWER MAINS AND SERVICES SHALL MEET ALL CURRENT REQUIREMENTS OF THE COUNTY & STATE HEALTH DEPARTMENTS.
5. MINIMUM CLEARANCE BETWEEN WATER AND SANITARY SEWER MAINS SHALL BE TEN (10) FEET.

REVISION DATE	CITY OF MENDOTA		STD.DWG.
9-25-07	<h1>UTILITY LOCATION IN STREET</h1>		<h2>M-1</h2>



ALL NEW CONSTRUCTION AND LOCATIONS WHERE SEWER INSTALLATION PRECEDES INSTALLATION OF WATER AND GAS

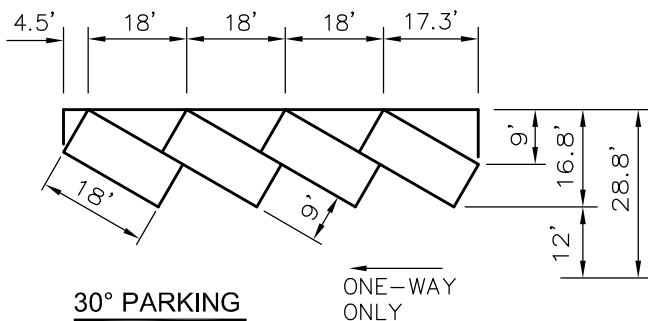
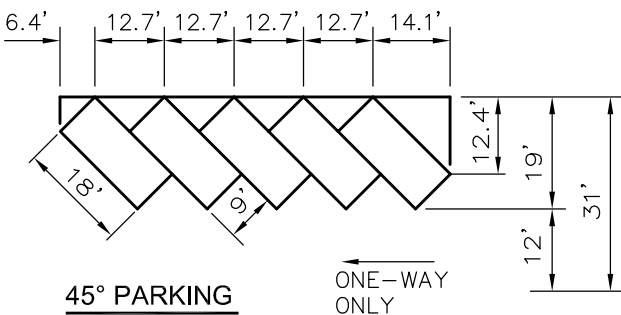
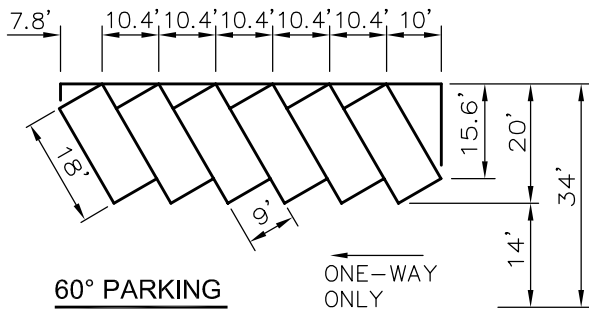
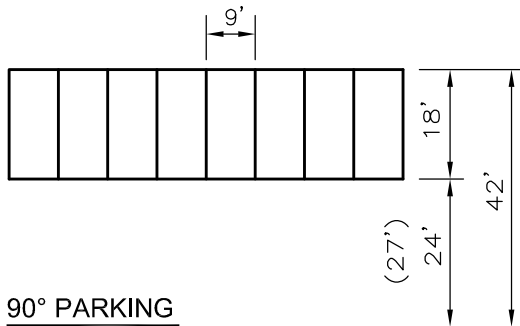
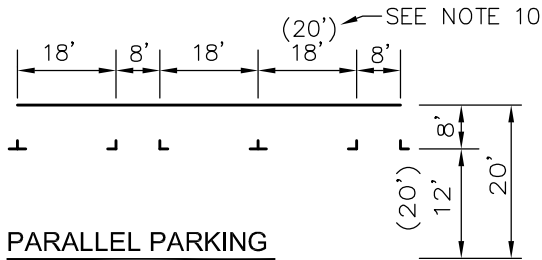


DEPTH OF WATER OR GAS MAINS IF INSTALLATION OF WATER OR GAS MAINS PRECEDES INSTALLATION OF SEWER

NOTES:

1. EXTEND HOUSE BRANCH 1' BEYOND PROPERTY LINES IN ALL CASES.
2. WATER MAINS AND TELEPHONE DUCTS SHALL OCCUPY ONE SIDE OF THE STREET.
3. GAS MAINS AND STORM MAINS TO OCCUPY THE OTHER SIDE.
4. THE LETTER "S" 3" HIGH SHALL BE SCRIBED IN THE FACE OF THE CURB AT THE LOCATION OF THE HOUSE BRANCH.
5. WHEN INSTALLING A NEW HOUSE BRANCH LINE, PLACE A 2X4" WOODEN STAKE AT THE END OF THE SERVICE BRANCH. THE STAKE SHOULD EXTEND FROM THE END OF THE BRANCH LINE TO A POINT APPROXIMATELY 2' ABOVE THE CURB GRADE.

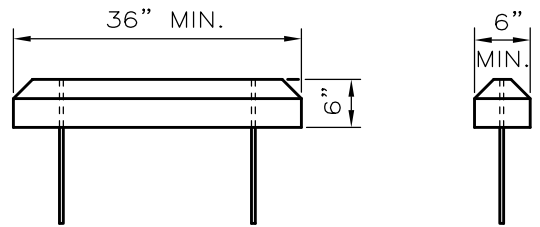
REVISION DATE	CITY OF MENDOTA		STD.DWG.
9-25-07	UTILITY LOCATION IN STREET		M-I
			Sht. 2 of 2



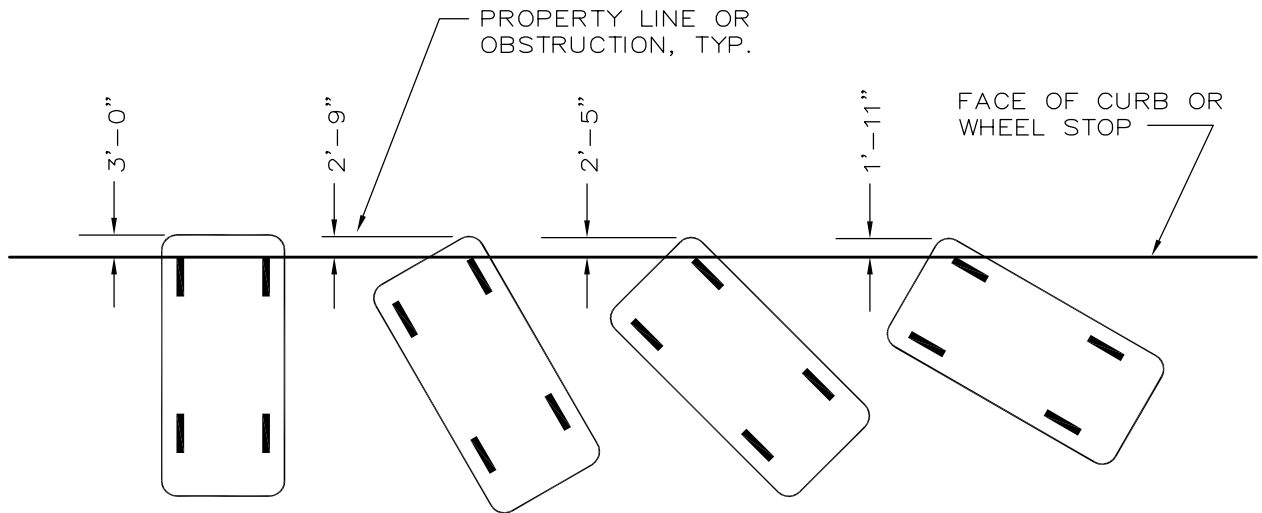
NOTES:

1. DIMENSIONS IN PARENTHESIS INDICATE THE MINIMUM DRIVE AISLE REQUIRED FOR TWO WAY TRAFFIC.
2. DRIVE AISLES WHICH PROVIDE DIRECT ACCESS TO ANGLED PARKING STALLS SHALL BE ONE-WAY.
3. THE PERCENTAGE OF AREA TO BE LANDSCAPED SHALL BE DETERMINED AT THE TIME OF SITE PLAN REVIEW.
4. PROVIDE THE NUMBER OF PARKING STALLS SPECIFIED BY THE CITY PLANNING DEPARTMENT, BASED ON ZONING AND LAND USE.
5. INSTALL WHEEL STOPS WHERE SHOWN ON STD. DWG. M-2, SHEET 2 OF 2.
6. REFER TO CONSTRUCTION PLANS FOR PARKING LOT DRAINAGE AND STRUCTURAL SECTION REQUIREMENTS.
7. PARKING LOTS SHALL HAVE ACCESSIBLE SPACES DESIGNATED IN ACCORDANCE WITH ADA STANDARDS AND CALTRANS RSP A90A OR A90B. ALL PARKING LOTS SHALL HAVE AT LEAST ONE ACCESSIBLE PARKING SPACE.
8. THE ADDRESS FOR THE R100B(CA) SIGN LOCATED AT THE PARKING LOT ENTRANCE SHALL BE "THE CITY PUBLIC WORKS YARD" AND THE TELEPHONE NUMBER SHALL BE 559-655-3291.
9. WHEN ACCESSIBLE PARKING SIGNS ARE WALL-MOUNTED, SIGN SHALL BE CENTERED ON THE WALL AT THE INTERIOR END OF THE PARKING SPACE AT A MINIMUM HEIGHT OF 60 INCHES ABOVE FINISH FLOOR OR GROUND SURFACE, MEASURED TO THE BOTTOM OF THE SIGN.
10. PARALLEL PARKING SPACES DESIGNATED AS ACCESSIBLE SHALL BE A MINIMUM OF 20 FEET IN LENGTH.
11. A MAXIMUM OF 30% OF THE REQUIRED PARKING SPACES MAY BE DESIGNED FOR COMPACT AUTOMOBILES. SIZE OF COMPACT AUTOMOBILE STALLS SHALL BE NO LESS THAN 9 FEET IN WIDTH BY 16 FEET IN LENGTH.

REVISION DATE		CITY OF MENDOTA PARKING LOT LAYOUT	STD.DWG.
03-06			M-2 1 OF 2
01-15			



CONCRETE WHEEL STOP



FRONT OVERHANG CLEARANCE

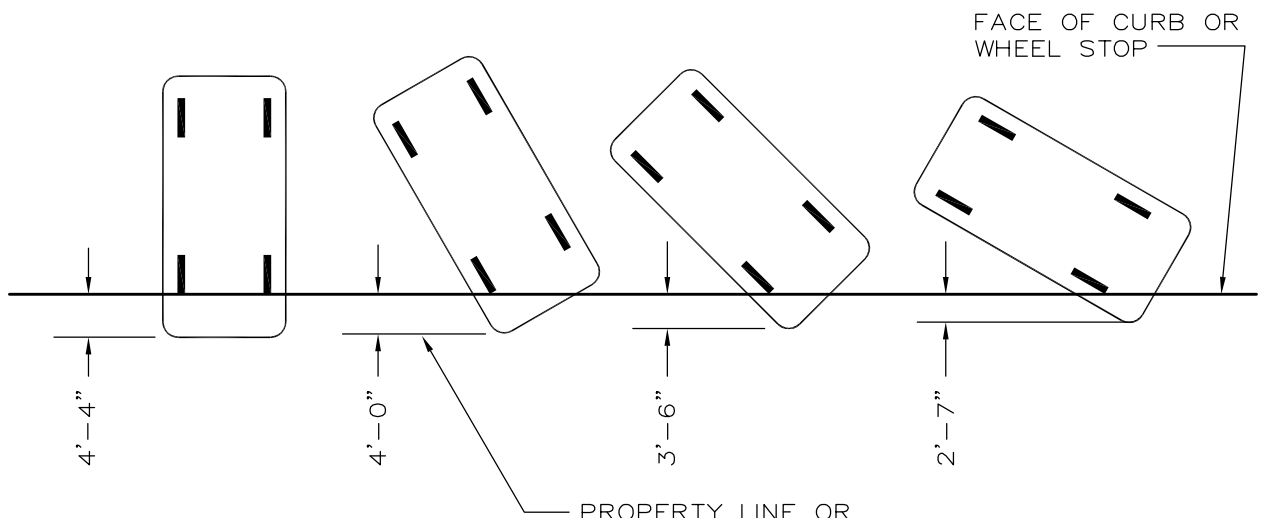
90°

60°

45°

30°

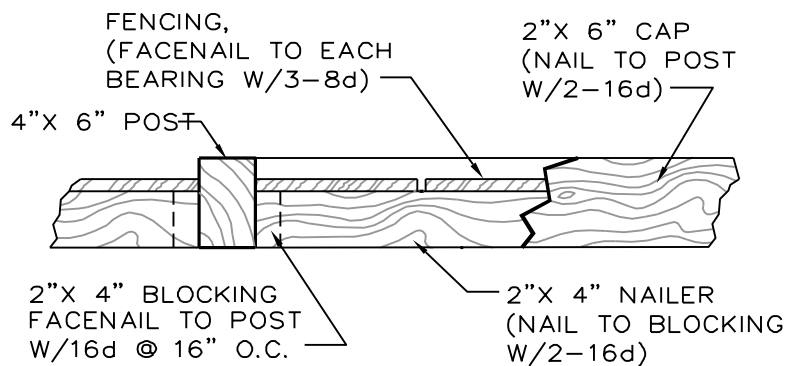
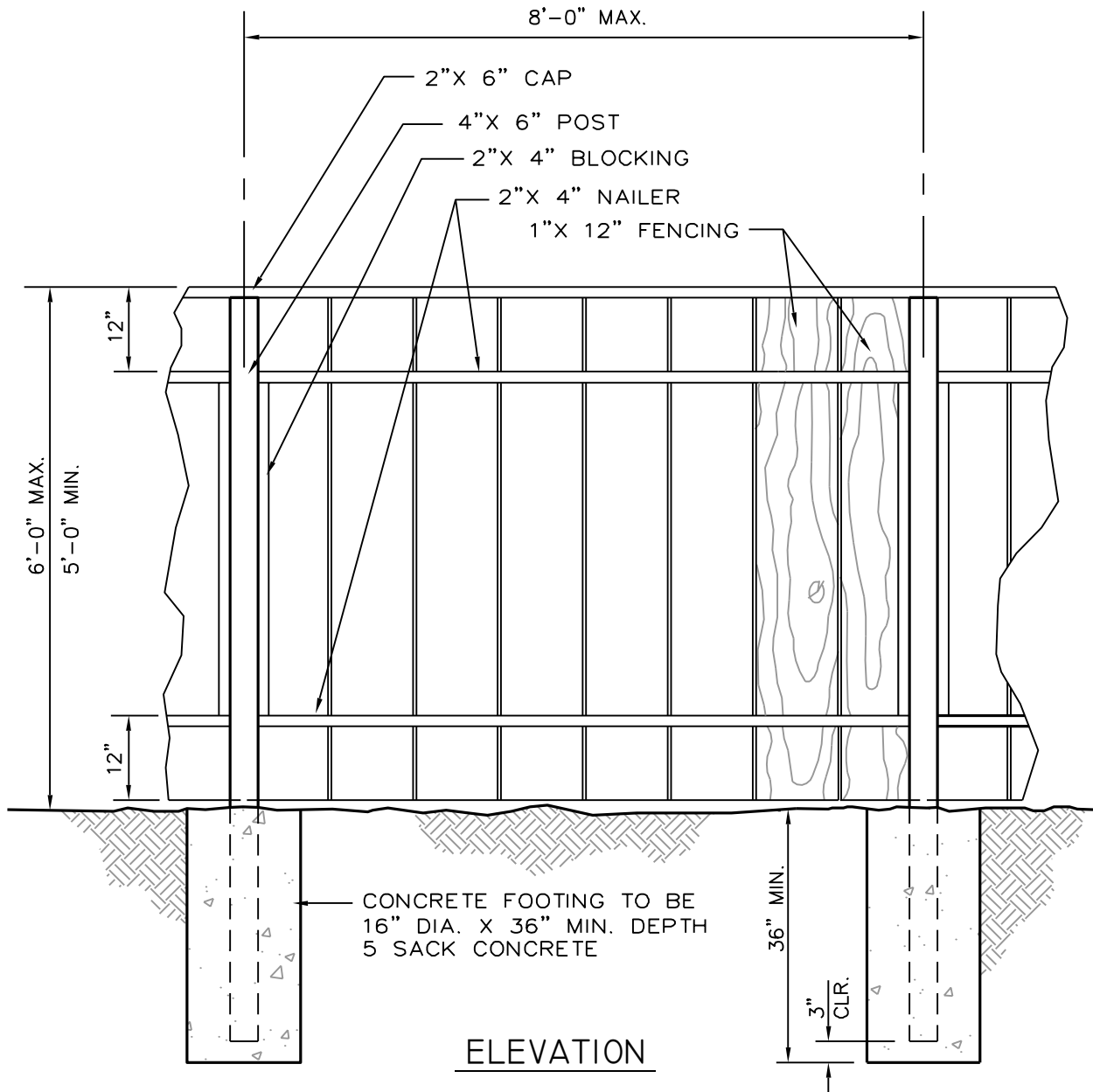
REAR OVERHANG CLEARANCE



NOTES:

- OVERHANG CLEARANCE SHALL BE INCREASED TO PREVENT ENCROACHMENT OF VEHICLES INTO THE MINIMUM REQUIRED WIDTH OF WALKWAYS OR ACCESSIBLE ROUTES.

REVISION DATE		CITY OF MENDOTA	STD.DWG.
01-15			M-2
		PARKING LOT OVERHANG CLEARANCE	2 OF 2

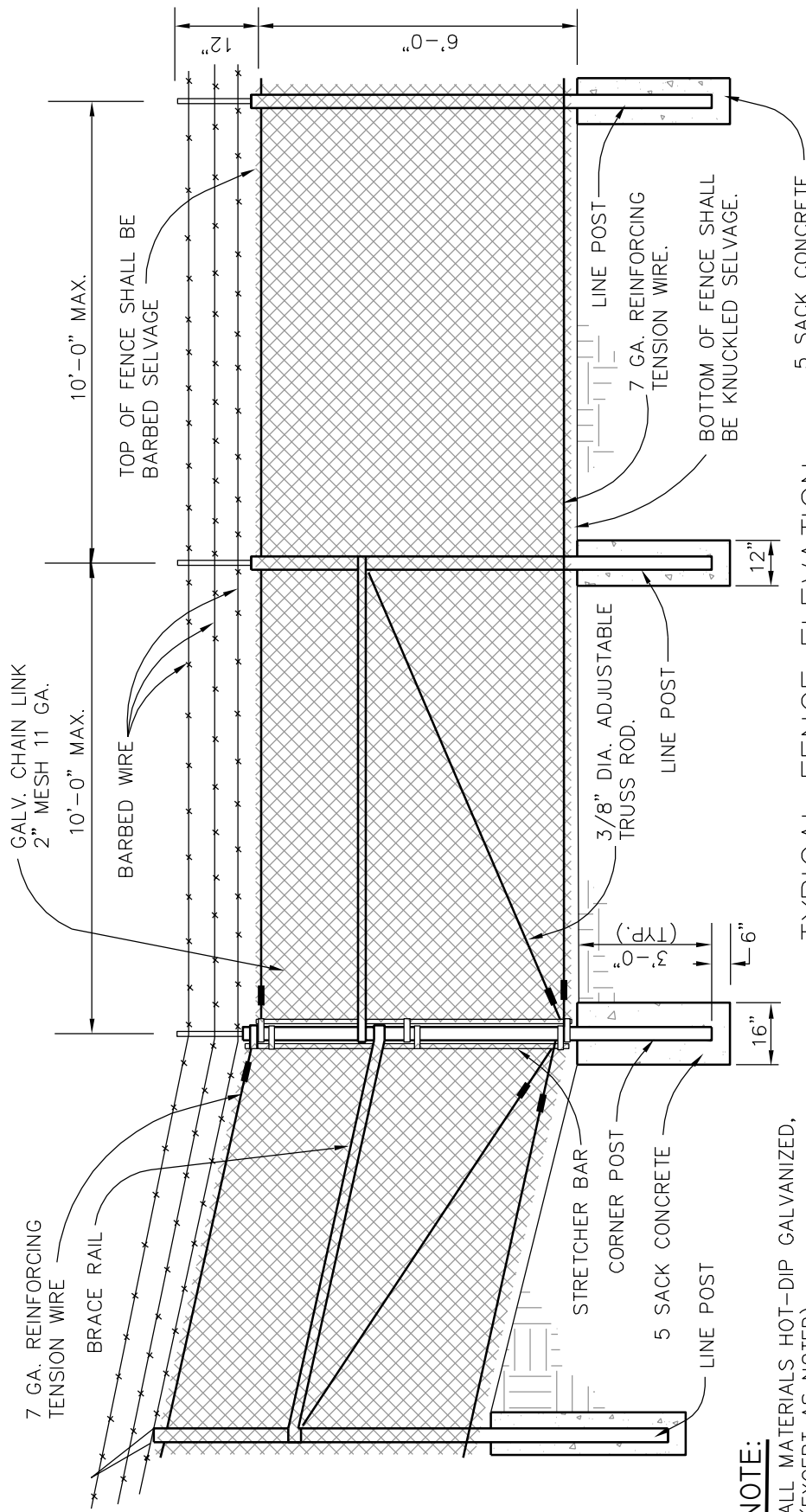


DETAIL

NOTES:

1. 1 x 12 FENCING SHALL BE CEDAR. POSTS, BLOCKING AND NAILERS SHALL BE PRESSURE TREATED DOUGLAS FIR CONFORMING TO STANDARDS OF QUALITY AT SECTION 2303.3, U.B.C.
2. ALL NAILS USED ARE TO BE GALVANIZED. NUMBER AND SIZE AS NOTED.

REVISION DATE	CITY OF MENDOTA	STD.DWG.
9-25-07	WOOD FENCE DETAIL RESIDENTIAL YARD CONSTRUCTION	M-3



TYPICAL FENCE ELEVATION

NOTE:
 ALL MATERIALS HOT-DIP GALVANIZED, (EXCEPT AS NOTED).
 WHEN DIRECTED BY THE CITY ENGINEER THE CHAIN LINK FABRIC SHALL HAVE FACTORY INSTALLED POLYETHYLENE OR WOOD SLATS.

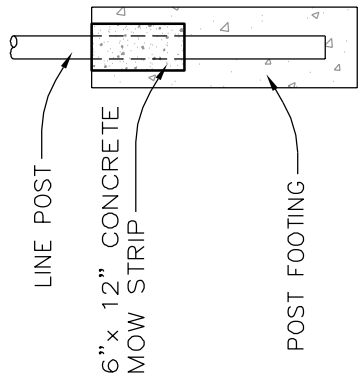


TABLE A

DESCRIPTION	SIZE	DESCRIPTION	SIZE
END POSTS	2-7/8" O.D. SCH.40	STRETCHER BAR BANDS	1/8" X 1"
CORNER POSTS	2-7/8" O.D. SCH.40	STRETCHER BARS	1/4" X 3/4"
LINE POSTS	2-3/8" O.D. SCH.40	TRUSS RODS	3/8" DIA. ADJUSTABLE
TENSION WIRE	7 GA. REINFORCING	TENSION WIRE TIES	11 GA. @ 24" O.C.
BRACE RAIL	1-5/8" O.D. SCH.40	LINE POSTS TIES	6 GA. @ 14" O.C.
GALVANIZED AFTER WEAVING CHAIN LINK FABRIC	2"x 11GA. x 6'	BARBED WIRE	12 1/2 GA. 4 PT.
		GATE POSTS	4-1/2" O.D. SCH.40

REVISION	DATE

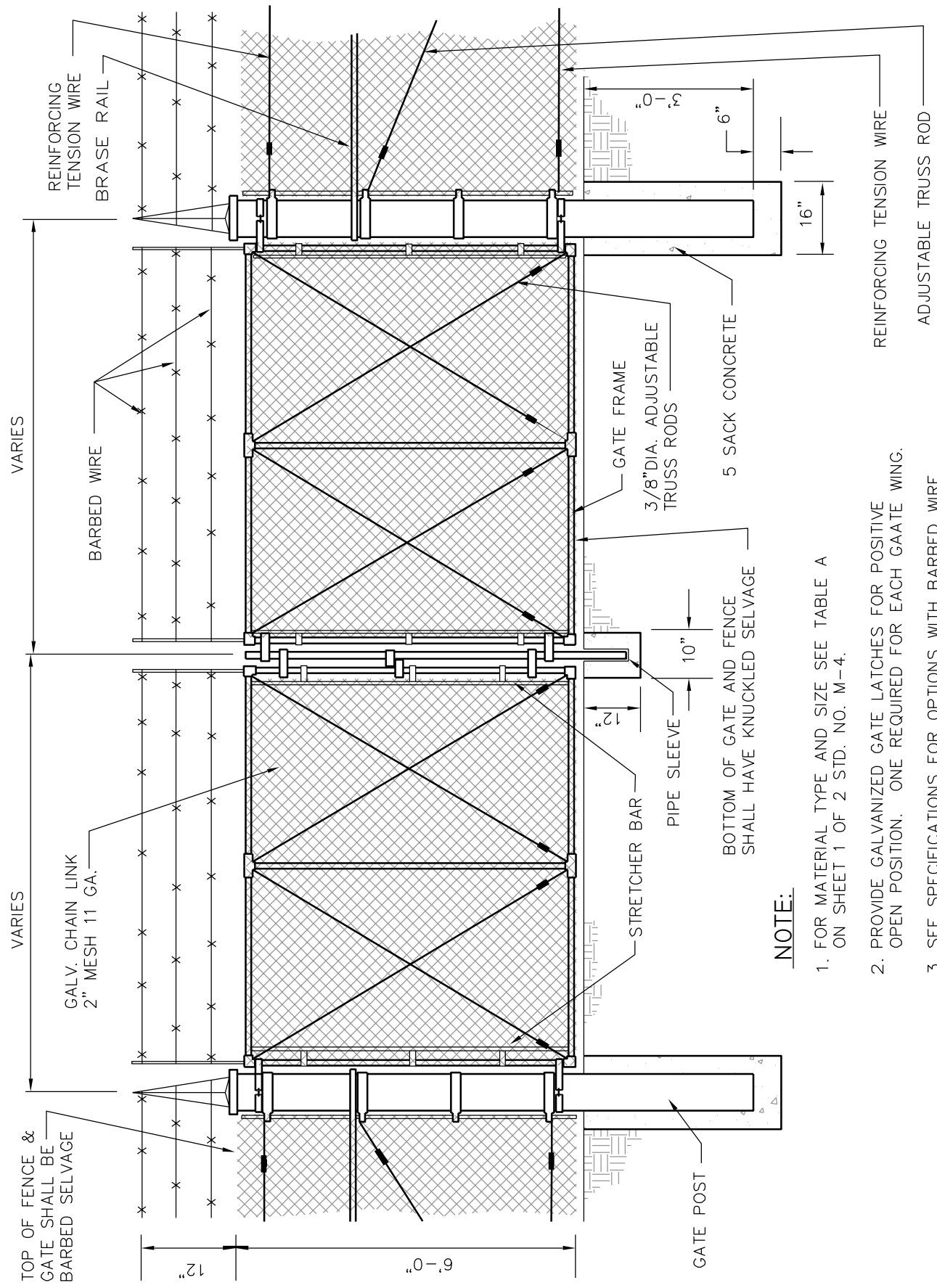
CITY OF MENDOTA

CHAIN LINK FENCE

STD. DWG.

M-4

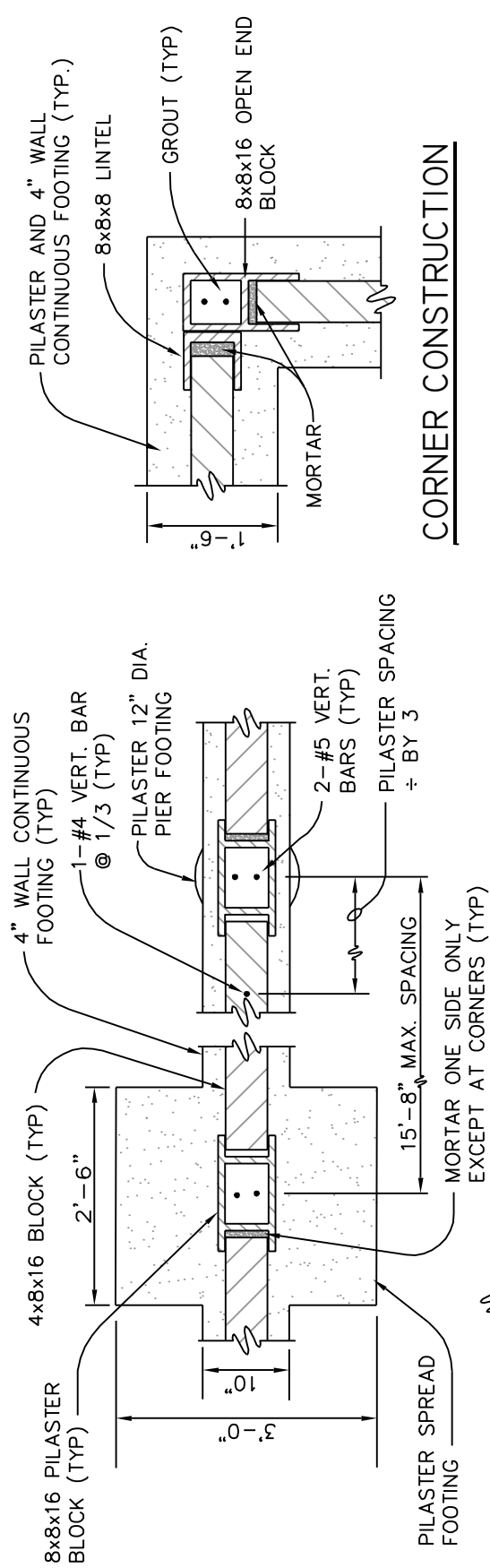
1 OF 2



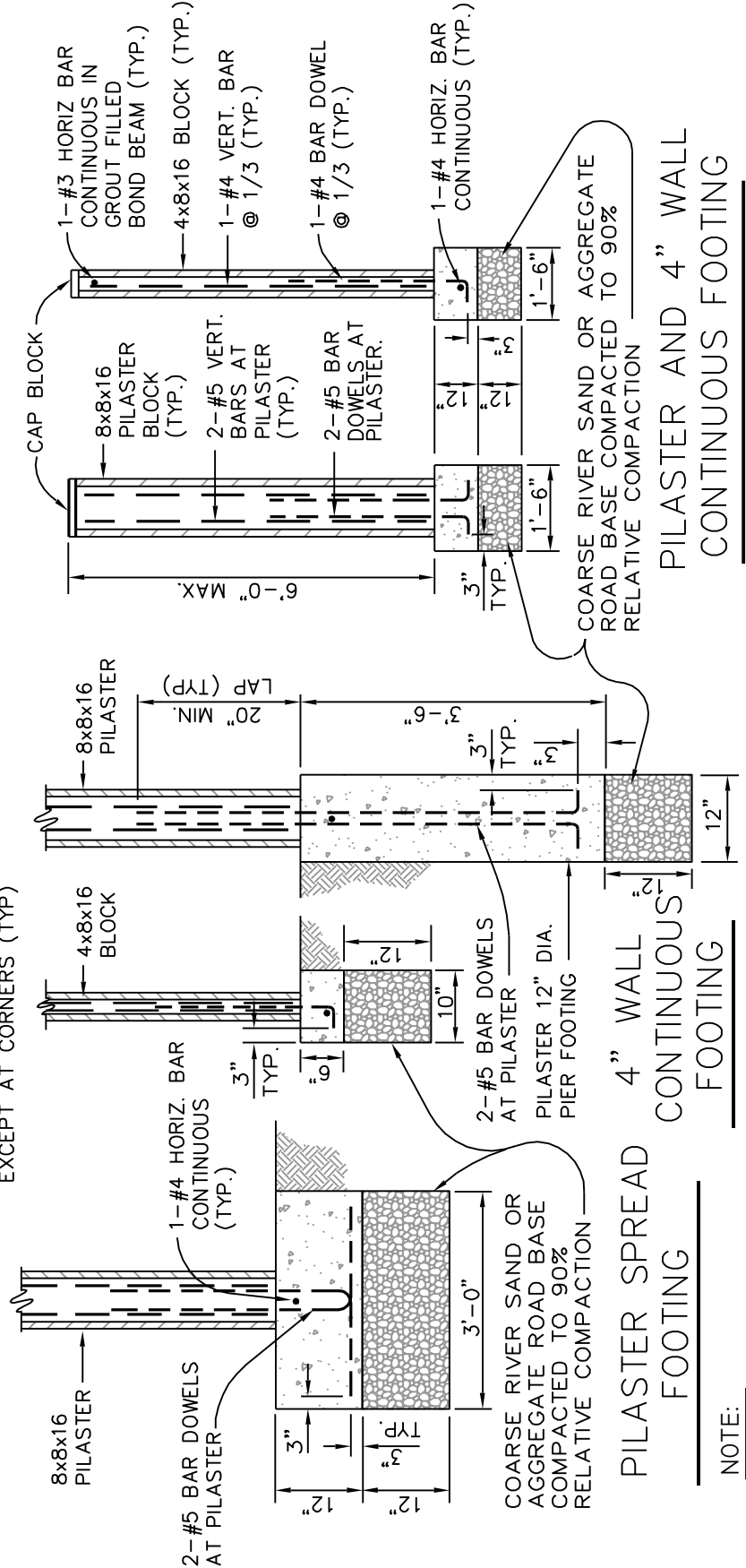
NOTE:

1. FOR MATERIAL TYPE AND SIZE SEE TABLE A ON SHEET 1 OF 2 STD. NO. M-4.
2. PROVIDE GALVANIZED GATE LATCHES FOR POSITIVE OPEN POSITION. ONE REQUIRED FOR EACH GATE WING.
3. SEE SPECIFICATIONS FOR OPTIONS WITH BARBED WIRE.

REVISION DATE	CITY OF MENDOTA	STD. DWG.
	CHAIN LINK GATE	M-4
		2 OF 2



CORNER CONSTRUCTION



PILASTER AND 4" WALL CONTINUOUS FOOTING

4" WALL CONTINUOUS FOOTING

PILASTER SPREAD FOOTING

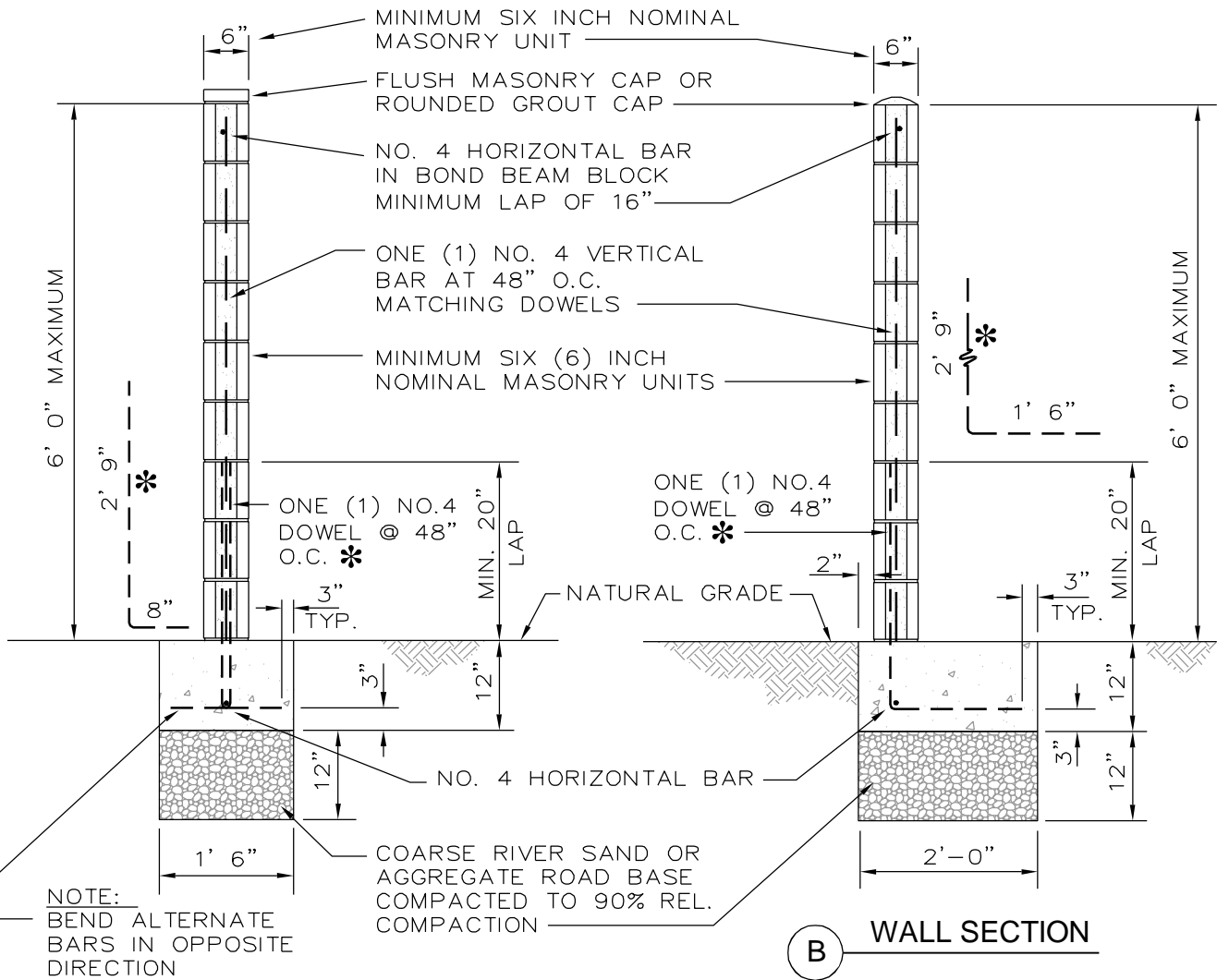
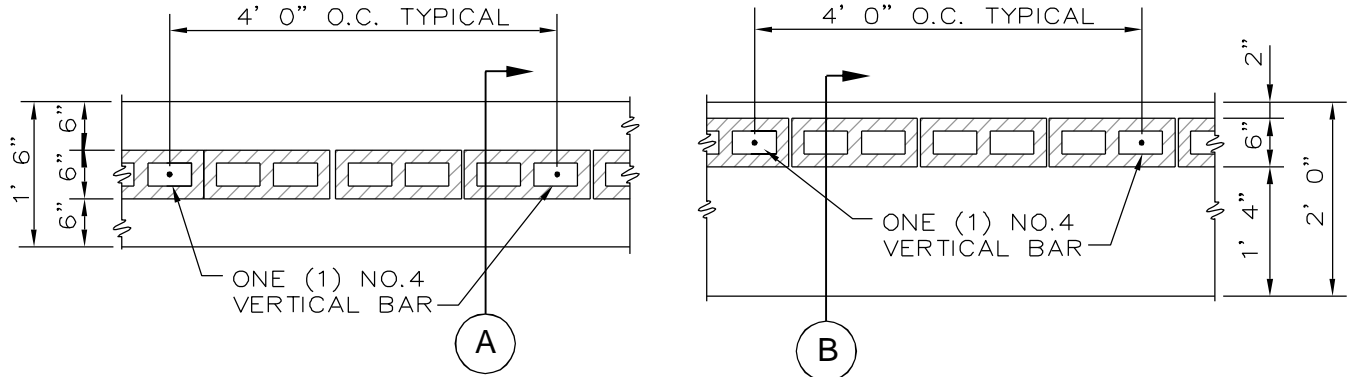
NOTE:

FOR GENERAL NOTES AND SPECIFICATION SEE STANDARD DRAWING M-7.

REVISION	DATE
9	25-07

CITY OF MENDOTA	
4" CONCRETE BLOCK FENCE	

STD.DWG.
M-5



NOTE:
BEND ALTERNATE
BARS IN OPPOSITE
DIRECTION

NOTES:

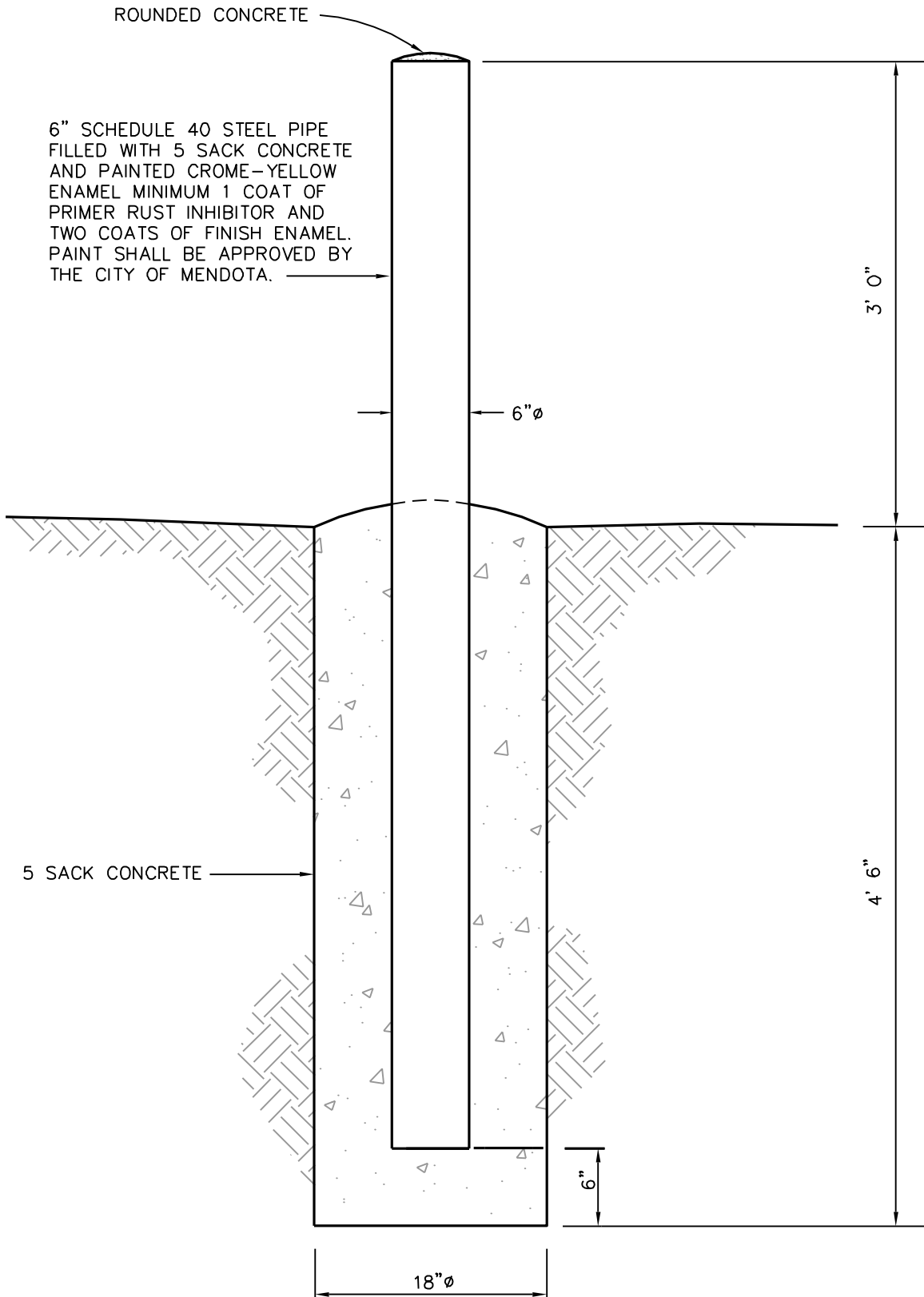
1. FOR GENERAL NOTES AND SPECIFICATIONS SEE STANDARD M-7.
2. BLOCK RETAINING WALLS SHALL BE ENGINEERED AND CERTIFIED.

REVISION DATE	CITY OF MENDOTA	STD.DWG.
	6" CONCRETE BLOCK FENCE	M-6

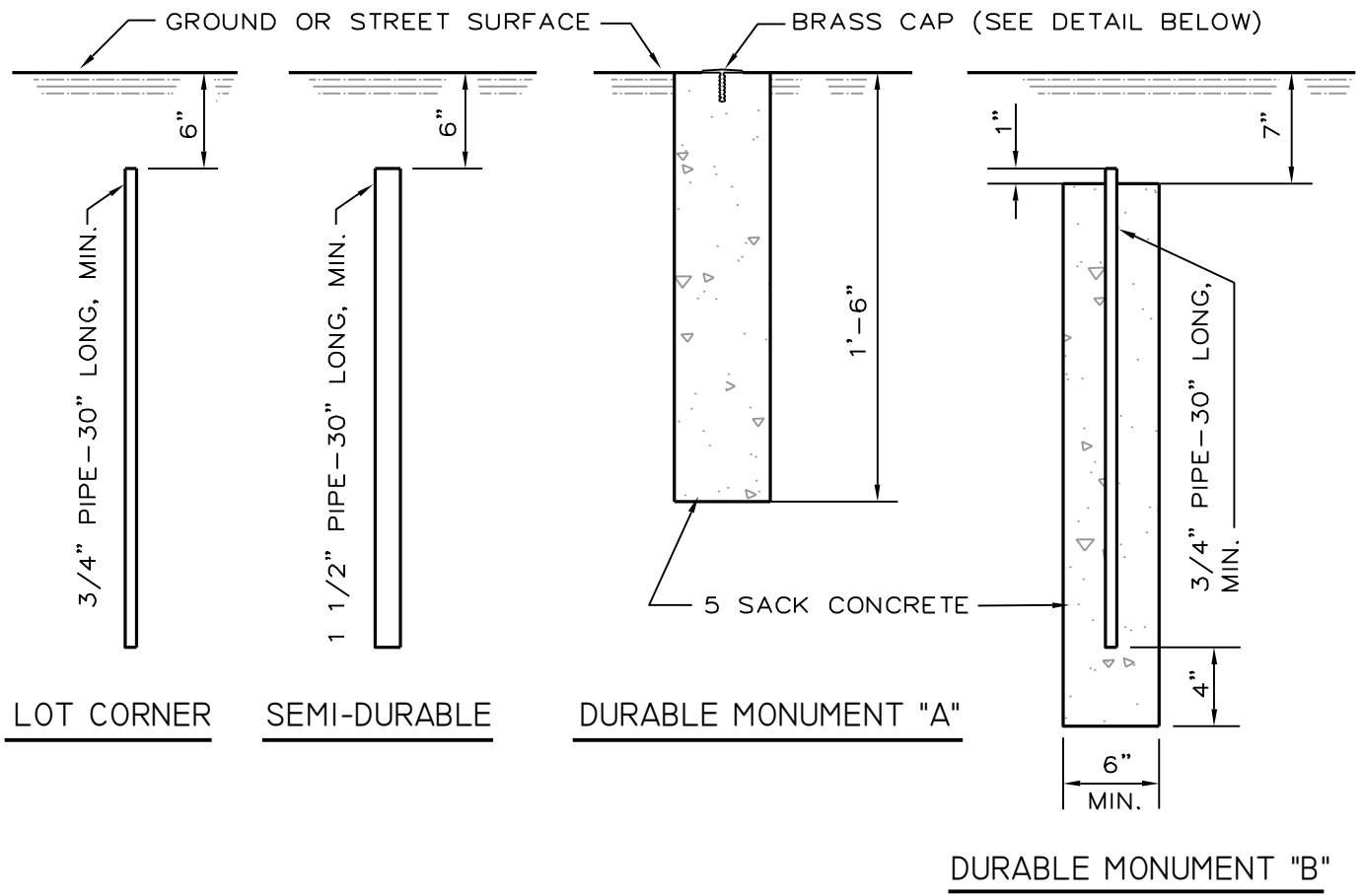
GENERAL NOTES AND SPECIFICATIONS:

- I. ALL CONSTRUCTION SHALL COMPLY WITH THE UNIFORM BUILDING CODES.
2. GROUT ALL CELLS CONTAINING REINFORCING STEEL.
3. ALL MASONRY UNITS SHALL COMPLY WITH THE LATEST ADOPTED UNIFORM BUILDING CODE, U.B.C. STD. 21-4 AND ASTM C-90, GRADE N.
4. ALL MASONRY WALLS SHALL BE INSPECTED BY THE CITY ENGINEER.
5. DEPTH OF FOOTINGS ARE TO BE PLACED ON IMPORTED RIVER SAND OR CLASS II AGGREGATE BASE PER STATE STANDARD SPECIFICATIONS. ALL IMPORT MATERIAL SHALL HAVE AN R-VALUE OF 50 OR GREATER.
6. REINFORCING STEEL SHALL BE DEFORMED BARS MINIMUM GRADE 40.
7. FOOTING CONCRETE SHALL BE MINIMUM 2500 PSI @ 28 DAYS.
8. THIS DESIGN SHALL NOT BE USED FOR RETAINING EARTH.
9. MORTAR SHALL BE TYPE-S (MIN. 1800 PSI @ 28 DAYS) 1 PART TYPE 1 CEMENT; ONE-HALF (1/2) PART LIME PUTTY OR HYDRATED LIME; FOUR AND ONE-HALF (4 1/2) PARTS SAND (MAXIMUM).
10. GROUT SHALL BE A MINIMUM 2000 PSI AT 28 DAYS, ONE PART CEMENT; THREE PARTS SAND; TWO PARTS PEA GRAVEL.
- II. EARTH COLORED MATERIALS SHALL BE USED WHERE RESIDENTIAL AREAS ARE AFFECTED.

REVISION DATE		CITY OF MENDOTA	STD.DWG.
		BLOCK FENCE GENERAL NOTES AND SPECIFICATIONS	M-7



REVISION DATE	CITY OF MENDOTA		STD.DWG.
	GUARD POST		M-8



LOT CORNER

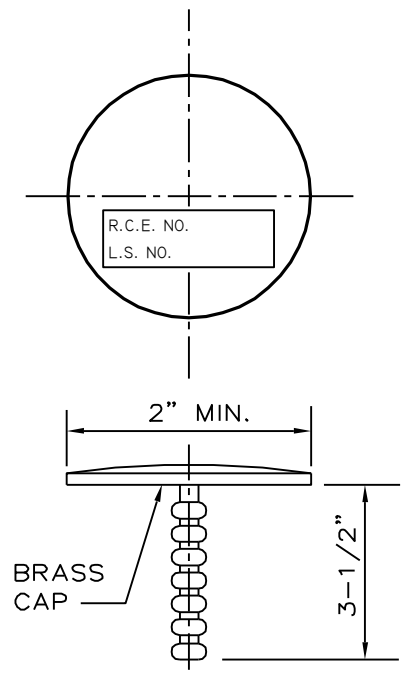
SEMI-DURABLE

DURABLE MONUMENT "A"

DURABLE MONUMENT "B"

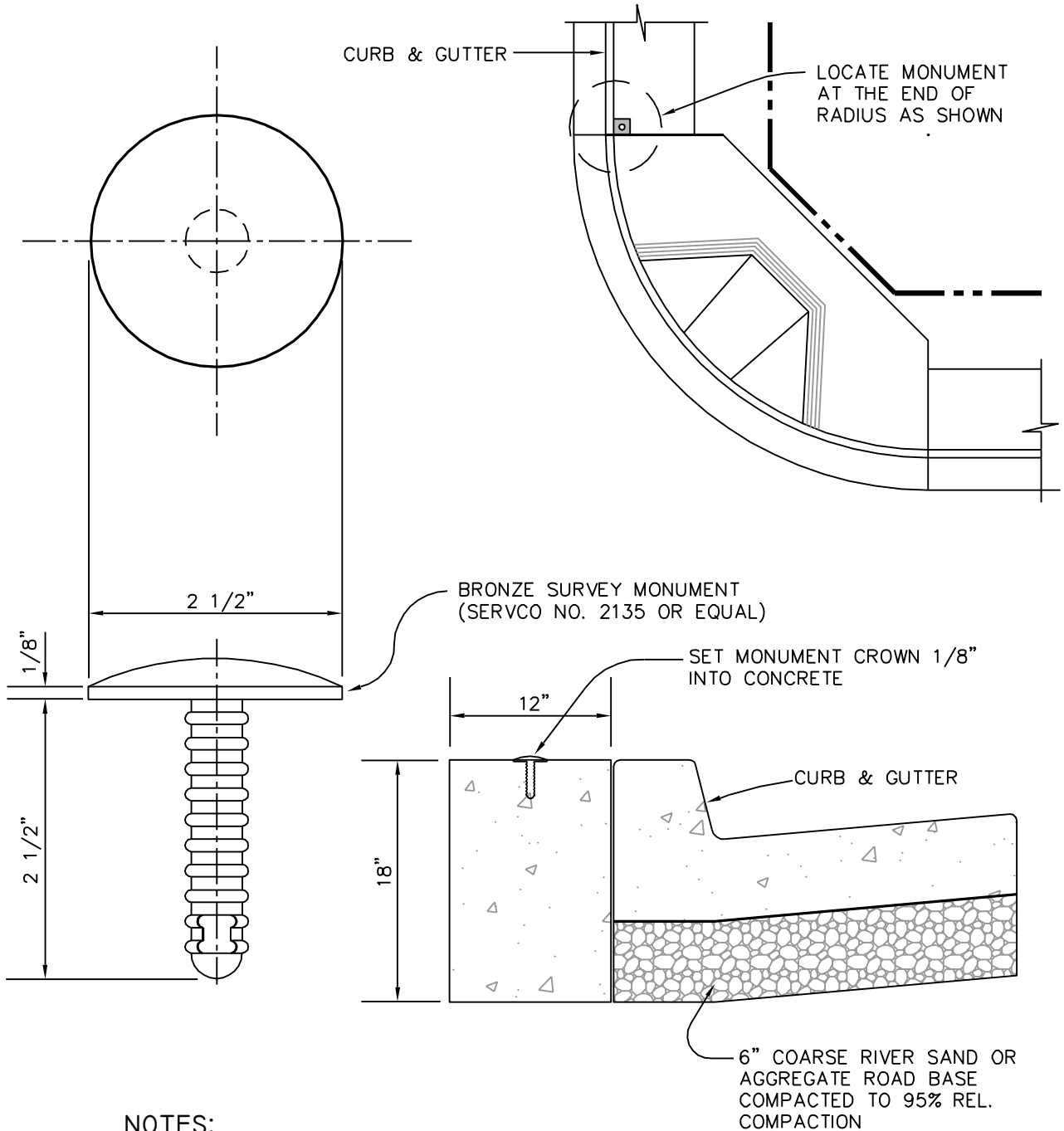
NOTES:

1. STATE LAW REQUIRES ALL CORNERS TO BE TAGGED WITH LAND SURVEYOR'S OR REGISTERED CIVIL ENGINEER'S NUMBER.
2. REGULAR-SHAPED SUBDIVISIONS SHALL HAVE BLOCK CORNERS MARKED WITH SEMI-DURABLE MONUMENTS OR DURABLE MONUMENT "B".
3. ALL INTERSECTIONS, ANGLE AND CURVE POINTS OF STREET CENTER LINES SHALL BE MARKED WITH DURABLE MONUMENTS "A", AFTER STREET SURFACING IS IN PLACE.



DETAIL - BRASS CAP

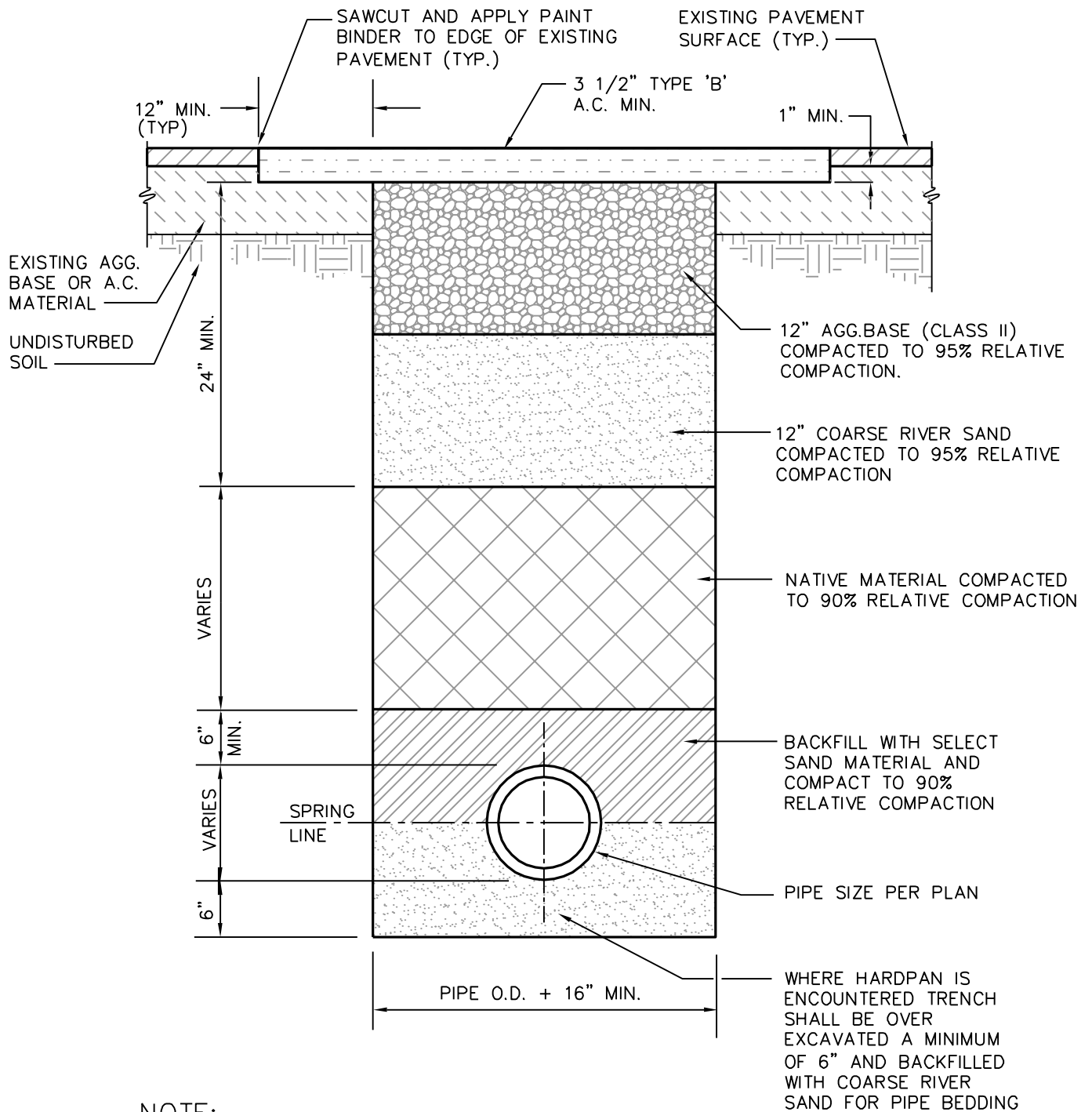
REVISION DATE	CITY OF MENDOTA	STD.DWG.
	PROPERTY MONUMENT DETAILS	M-9



NOTES:

1. LOCATE BENCH MARKS AT THE NORTHEAST CORNER OF INTERSECTIONS APPROVED BY THE CITY ENGINEER.
2. COMPLETE NOTES SHOWING LOCATIONS, ELEVATIONS, AND CLOSURES SHALL BE FILED WITH THE CITY ENGINEER.
3. ELEVATION SHALL BE BASED ON U.S.G.S DATUM.
4. BENCH MARK MONUMENT SHALL BE BRONZE SURVEY MONUMENT (SERVCO NO. 2135 OR APPROVED EQUAL. AVAILABLE AT: SERVCO, 2942 CENTURY PLACE, COSTA MESA, CA. 92626.)

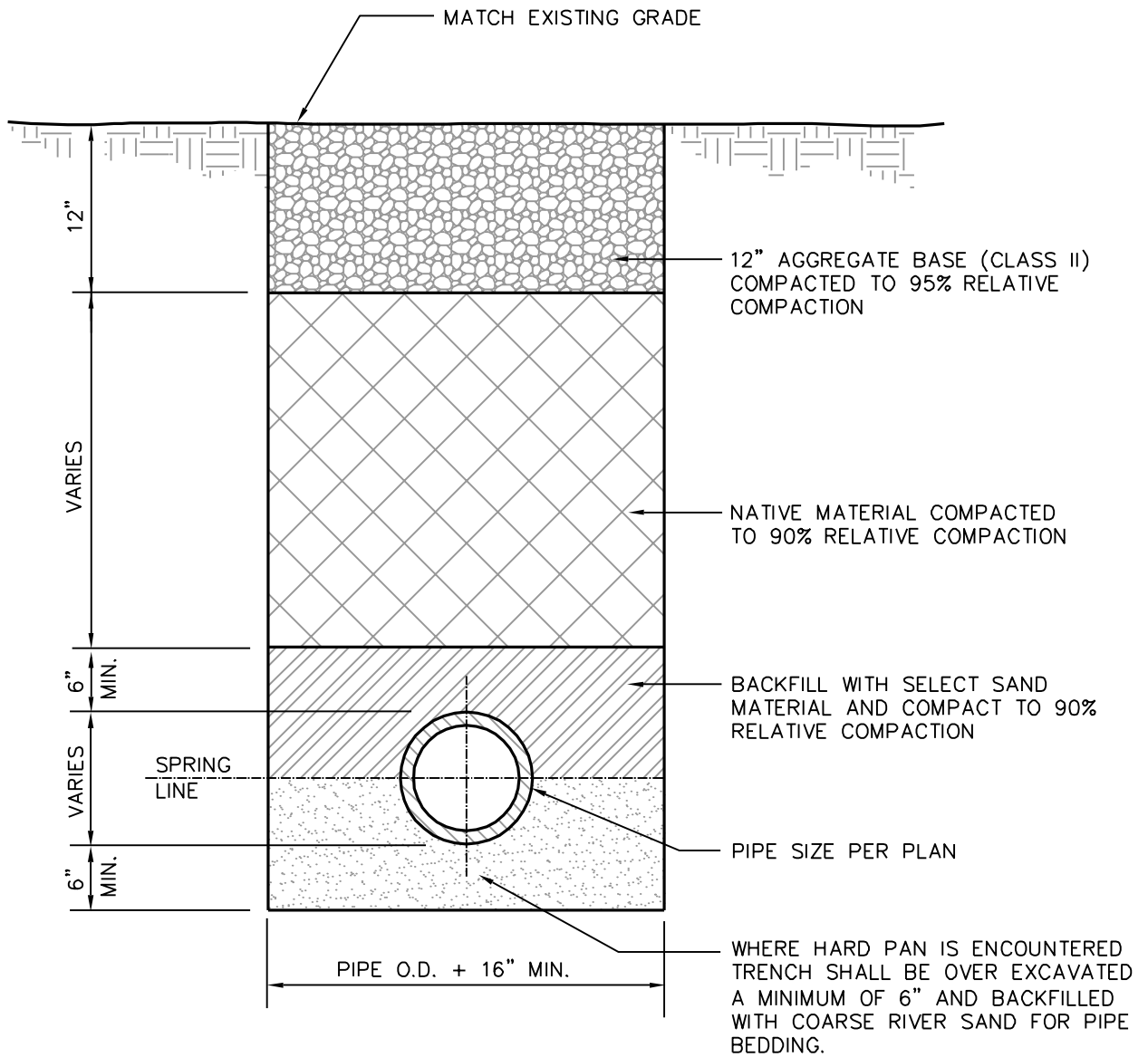
REVISION DATE	CITY OF MENDOTA		STD.DWG.
	BENCH MARK		M-10



NOTE:

COMPACTION OF ALL MATERIALS SHALL BE PER ASTM D-1557 & D-2937 EXCEPT THAT D-2922 MAY BE USED FOR THE AGGREGATE BASE.

REVISION DATE	CITY OF MENDOTA	STD.DWG.
	TRENCH BACKFILL & RESURFACING DETAIL	M-IIA



NOTE:

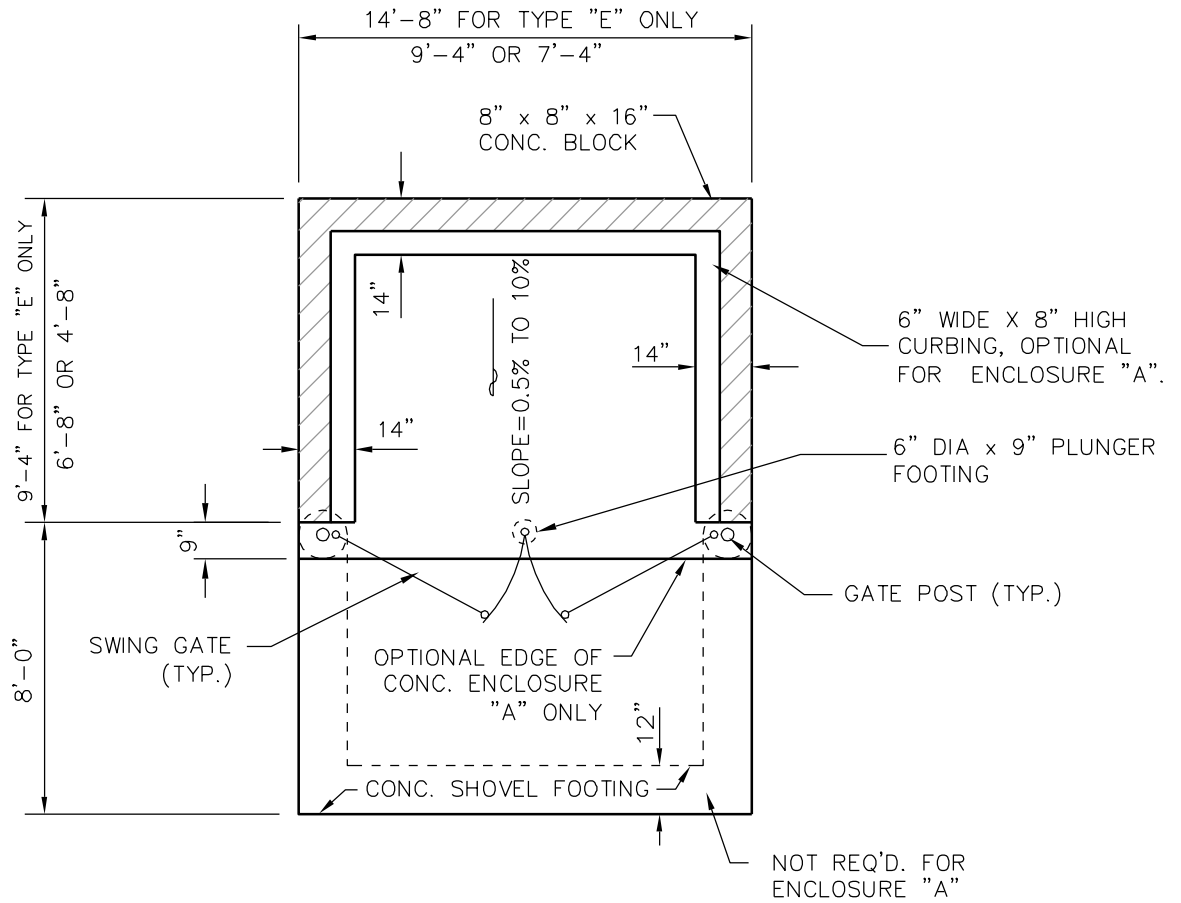
COMPACTION OF ALL MATERIALS SHALL BE PER ASTM D-1557 & D-2937 EXCEPT THAT D-2922 MAY BE USED FOR THE AGGREGATE BASE.

REVISION DATE	CITY OF MENDOTA	STD.DWG.
	TRENCH BACKFILL UNPAVED AREAS	M-IIB

GENERAL NOTES AND SPECIFICATIONS

1. ALL CONSTRUCTION SHALL COMPLY WITH THE UNIFORM BUILDING CODE.
2. GROUT ALL CELLS CONTAINING REINFORCING STEEL.
3. ALL MASONRY UNITS SHALL COMPLY WITH THE LATEST ADOPTED UNIFORM BUILDING CODE, U.B.C. ST. 21-4 AND ASTM C-90, GRADE N.
4. ALL MASONRY WALLS SHALL BE INSPECTED BY THE CITY ENGINEER.
5. DEPTHS OF FOOTINGS ARE INTO NATURAL UNDISTURBED SOIL OR TESTED AND APPROVED COMPACTED FILL.
6. REINFORCING STEEL SHALL BE DEFORMED BARS MINIMUM GRADE 40.
7. FOOTING CONCRETE SHALL BE MINIMUM 2500 PSI @ 28 DAYS.
8. THIS DESIGN SHALL NOT BE USED FOR RETAINING EARTH.
9. MORTAR SHALL BE TYPE-S (MIN. 1800 PSI @ 28 DAYS) 1 PART TYPE 1 CEMENT, ONE HALF (1/2) PART LIME PUTTY OR HYDRATED LIME; FOUR AND ONE HALF (4 1/2) PARTS SAND MAXIMUM).
10. GROUT SHALL BE A MINIMUM 2000 PSI @ 28 DAYS, ONE PART CEMENT, THREE PARTS SAND, TWO PARTS PEA GRAVEL.
11. EARTH COLORED MATERIALS SHALL BE USED WHERE RESIDENTIAL AREAS ARE AFFECTED.
12. CHAIN LINK GATE SHALL HAVE STANDARD FORK TYPE LATCH.
13. CHAIN LINK FABRIC SHALL BE 11 GA. MIN. AND SIZED FOR LATH INSERTS, REDWOOD, CEDAR OR AS APPROVED BY CITY ENGINEER.
14. GATE SHALL BE DOUBLE SWING GATES FOR TYPE "A" AND "B" AND "E" ENCLOSURES. DOUBLE SWING GATES SHALL HAVE CENTER PLUNGER STOP ON ONE LEAF.
15. ALL CHAINLINK GATE MATERIALS SHALL BE HOT DIP GALVANIZED STRUCTURAL STEEL GATES SHALL BE POWDER COATED OR OTHER COATING APPROVED BY THE CITY ENGINEER. SEE CHAINLINK FENCE STANDARD M-4, SHEETS 1 & 2 FOR ADDITIONAL REQUIREMENTS.
16. CONTRACTOR SHALL VERIFY SIZE OF OPENING IN FIELD.
17. TRASH ENCLOSURE TYPE "A" – TRASH CANS ONLY.
18. TRASH ENCLOSURE TYPE "B" – TRASH CANS OR SINGLE BIN.
19. TRASH ENCLOSURE TYPE "C" – MULTIPLE BINS AND RECYCLE CANS.
20. TRASH ENCLOSURE TYPE "D" – MULTIPLE BINS AND RECYCLE BIN.
21. TRASH ENCLOSURE TYPE "E" – TRASH BIN AND RECYCLE BIN.
22. SIZE TO BE APPROVED BY CITY ENGINEER.

REVISION DATE		CITY OF MENDOTA	STD.DWG.
26AUG05	9-25-07		COMMERCIAL & INDUSTRIAL TRASH ENCLOSURE
25NOV08	6-23-09		



TRASH ENCLOSURE PLAN TYPE "A" & "B" & "E"

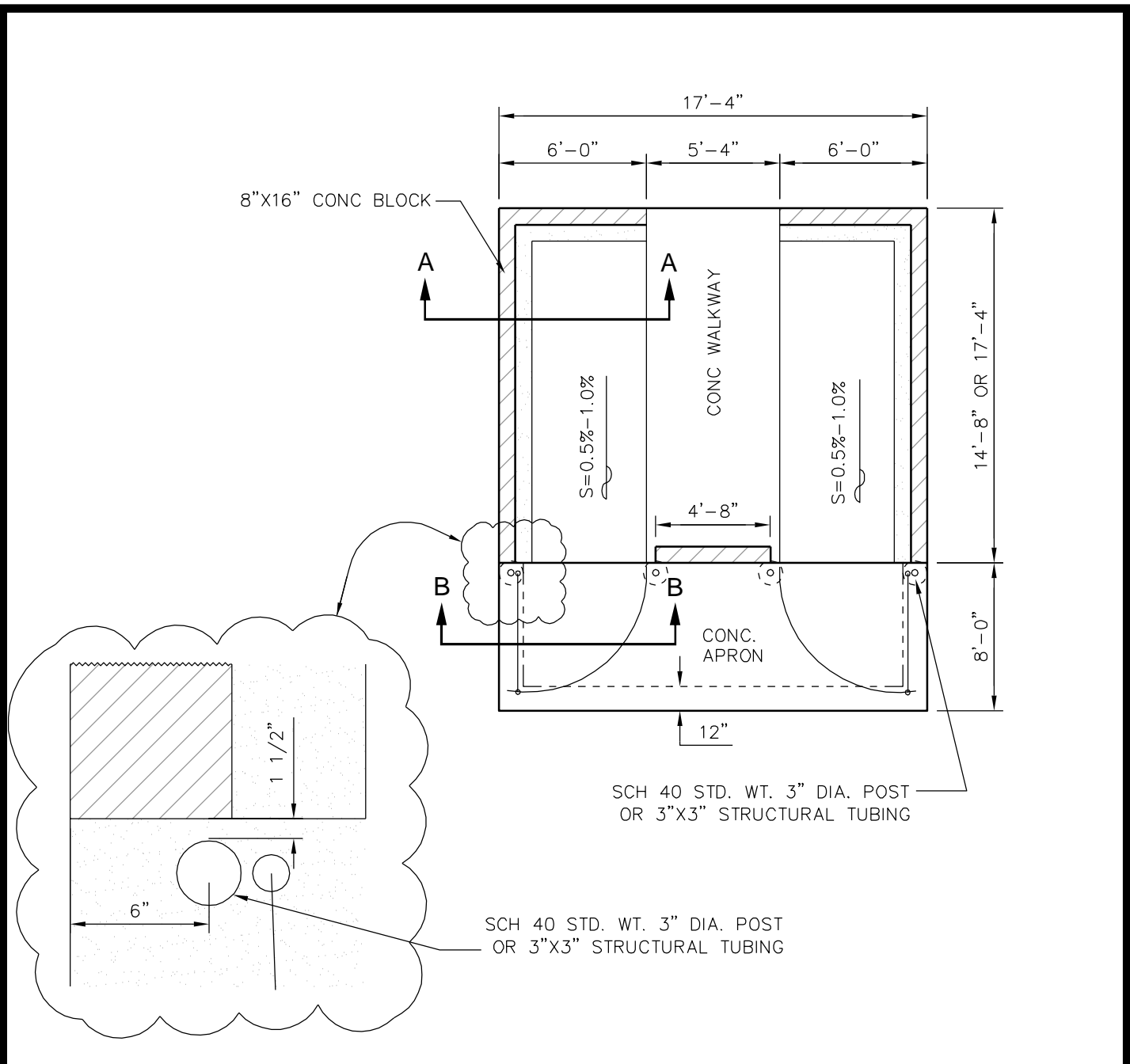
TRASH ENCLOSURE SIZE

- TYPE "A" - TRASH CANS ONLY
(7'- 4" X 4'- 8")
- TYPE "B" - TRASH CANS OR SINGLE BIN
(9'- 4" X 6'- 8")
- TYPE "E" - TRASH BIN AND RECYCLE BIN
(14'- 8" X 9'- 4")

NOTES:

- TRASH ENCLOSURE SIZE TO BE APPROVED BY CITY ENGINEER AND REFUSE HAULER
- GATE HARDWARE SHALL CONFORM TO CITY STD. M-4.
- WALL SECTION SHALL CONFORM TO SHEET 4 OF 5 EXCEPT FOR WALKWAY.
- GATE MOUNTING SHALL CONFORM TO SHEET 5 OF 5 EXCEPT THAT CENTER WALL SECTION IS OMITTED AND GATES SHALL BE DOUBLE SWING GATES WITH CENTER PLUNGER

REVISION DATE		CITY OF MENDOTA	STD.DWG.
26AUG05	9-25-07	COMMERCIAL & INDUSTRIAL TRASH ENCLOSURE	M-12 2 OF 5
25NOV08	6-23-09		



TRASH ENCLOSURE PLAN TYPE "C" & "D"

TRASH ENCLOSURE SIZE

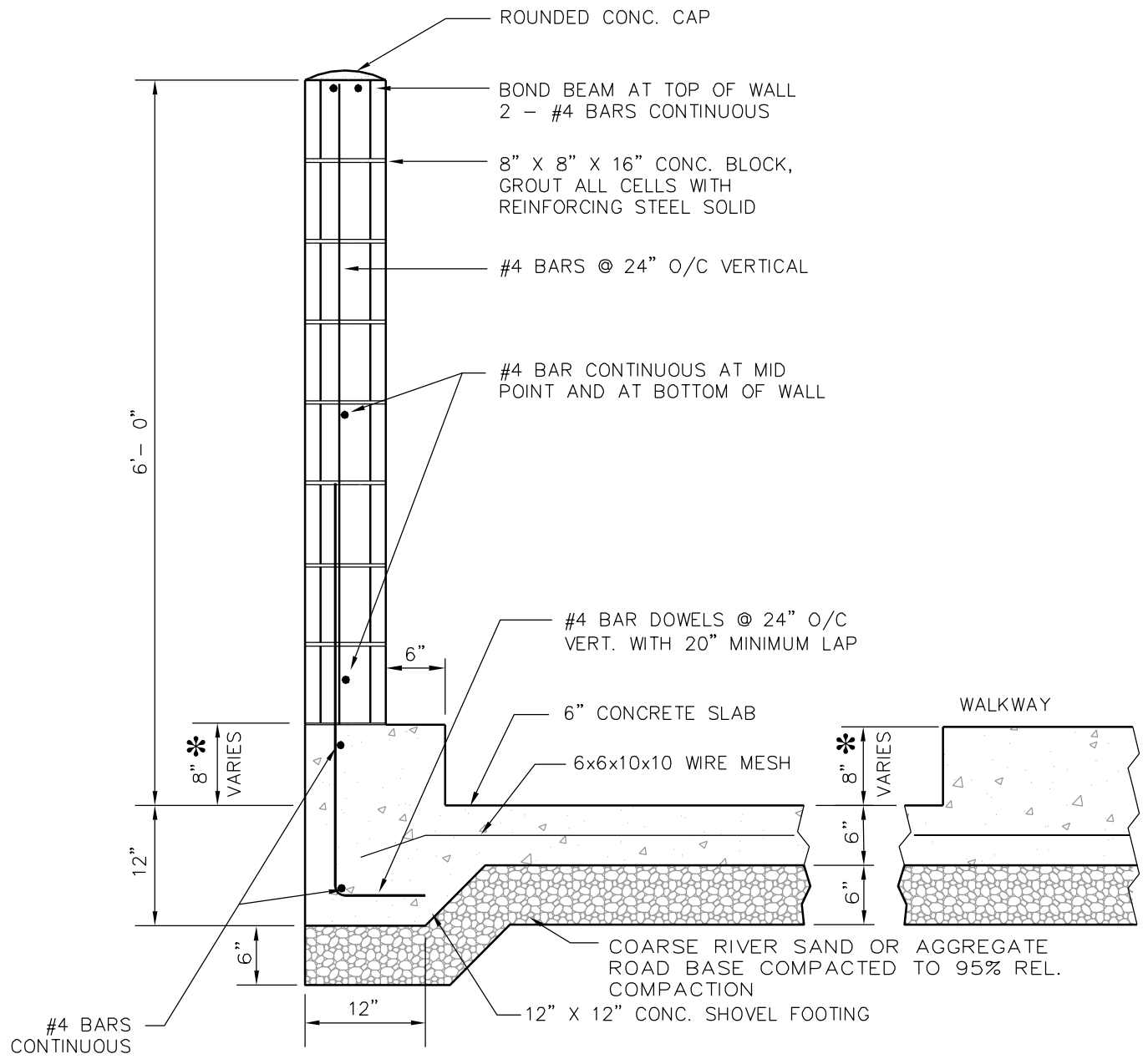
TYPE "C" - MULTIPLE BINS & RECYCLE CANS
(17'-4" X 14'- 8")

TYPE "D" - MULTIPLE BINS & RECYCLE BINS
(17'- 4" X 17'- 4")

NOTE:

TRASH ENCLOSURE SIZE TO BE APPROVED BY CITY ENGINEER AND REFUSE HAULER

REVISION DATE		CITY OF MENDOTA	STD.DWG.
26AUG05	9-25-07		
25NOV08	6-23-09	COMMERCIAL & INDUSTRIAL TRASH ENCLOSURE	M-12 3 OF 5

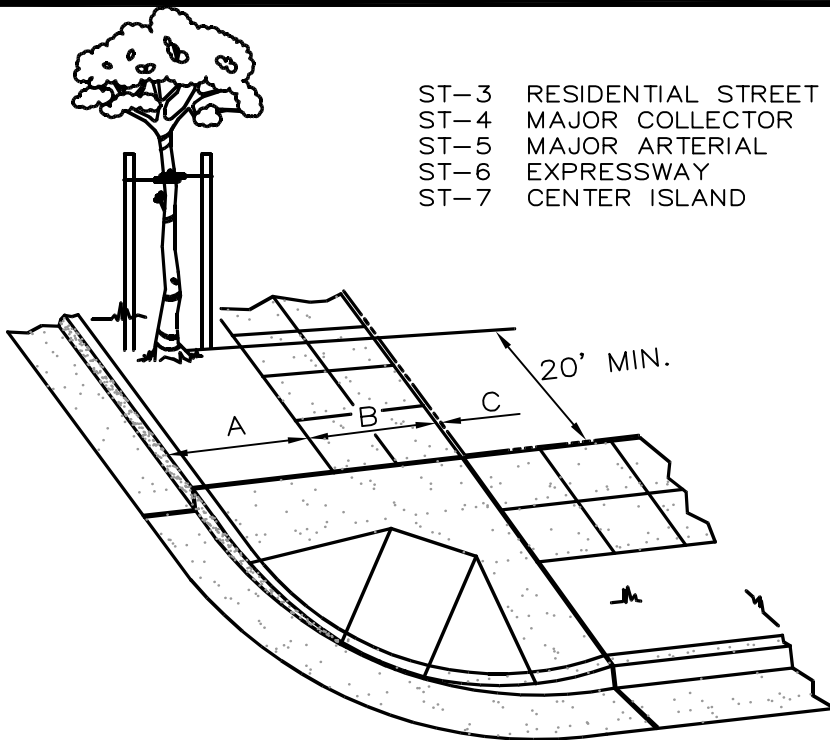


BLOCK WALL SECTION A - A

*** NOTE**

1. FOUNDATION STEM WALL MAY BE OMITTED FROM TRASH ENCLOSURE TYPE "A".
2. WALKWAY AND STEM WALL HEIGHT VARIES FROM 8" AT BACK OF STRUCTURE TO MAXIMUM OF 10" AT FRONT DEPENDING UPON FLOOR SLOPE.

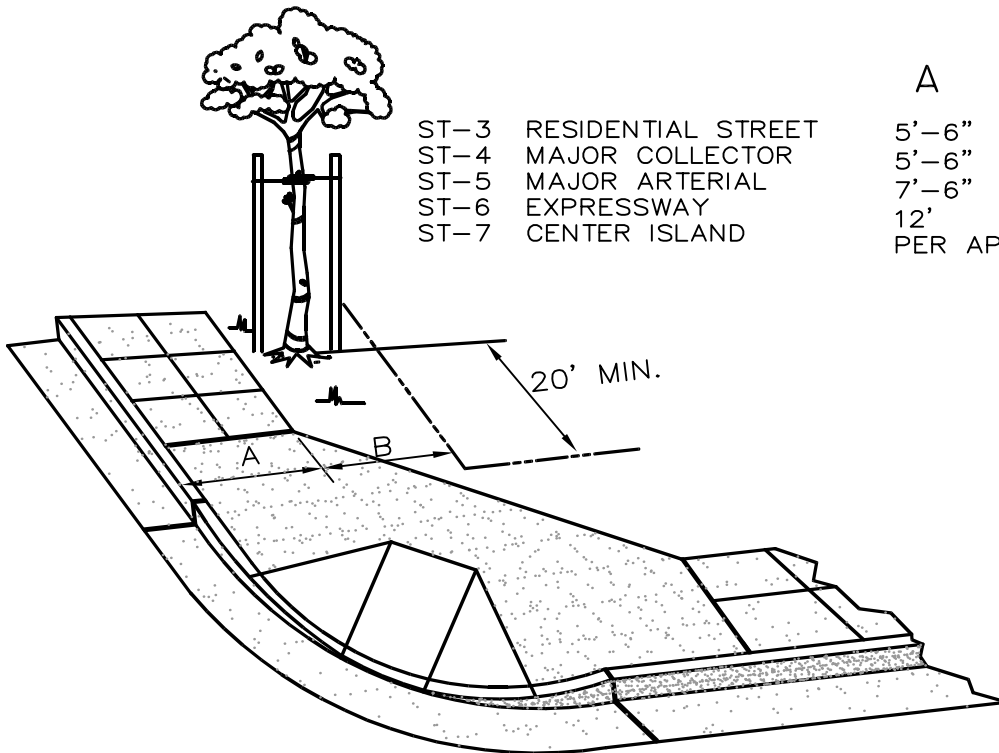
REVISION DATE		CITY OF MENDOTA	STD.DWG.
26AUG05	9-25-07		COMMERCIAL & INDUSTRIAL TRASH ENCLOSURE
25NOV08	6-23-09		



ST-3 RESIDENTIAL STREET
 ST-4 MAJOR COLLECTOR
 ST-5 MAJOR ARTERIAL
 ST-6 EXPRESSWAY
 ST-7 CENTER ISLAND

A	B	C
4'-6"	5'	6"
4'-6"	5'	6"
NOT APPLICABLE		
6'-6"	5'	6"
PER APPLICABLE CONDITIONS		

CURB, GUTTER AND SIDEWALK WITH PARK STRIP

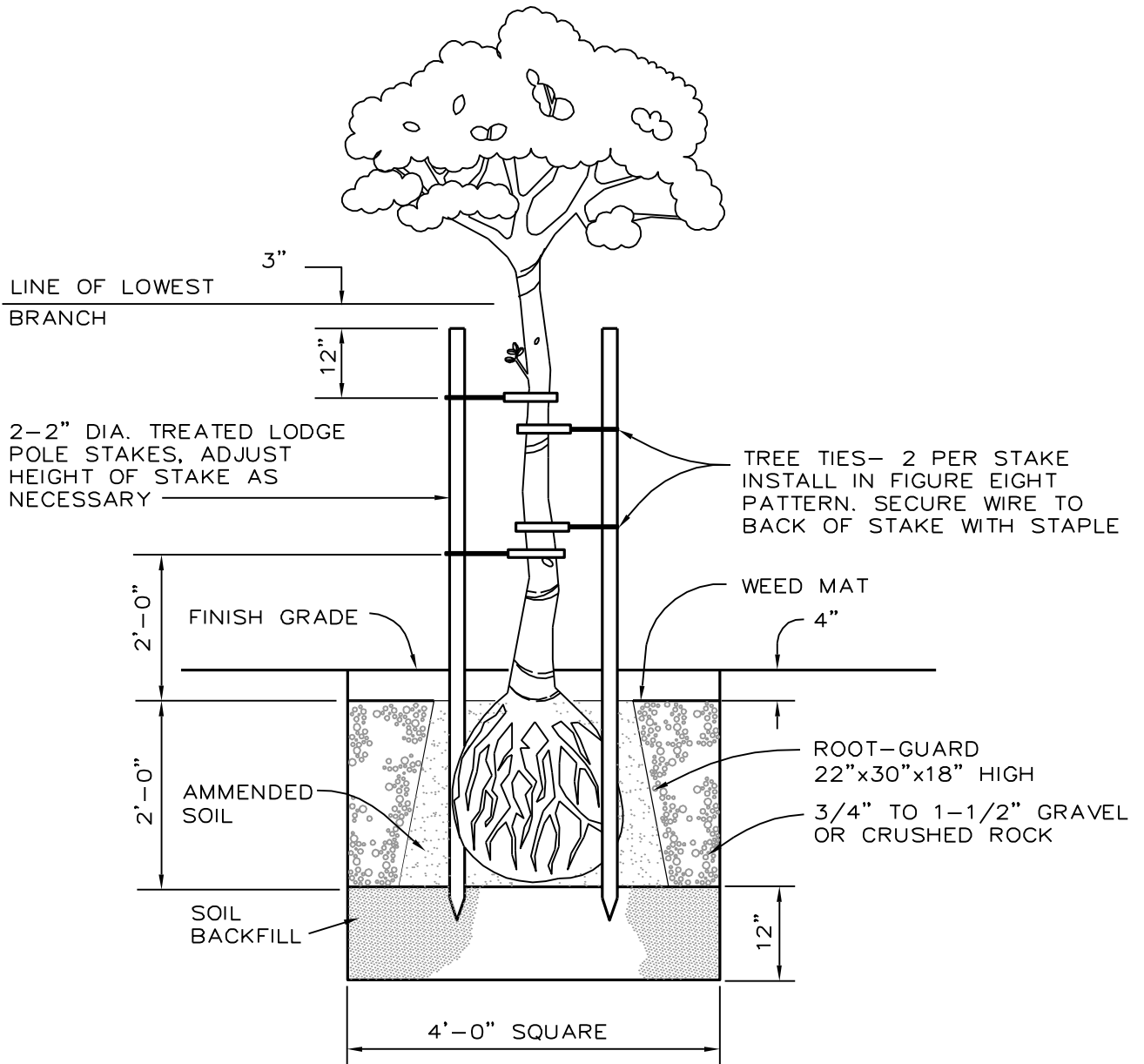


ST-3 RESIDENTIAL STREET
 ST-4 MAJOR COLLECTOR
 ST-5 MAJOR ARTERIAL
 ST-6 EXPRESSWAY
 ST-7 CENTER ISLAND

A	B
5'-6"	4'-6"
5'-6"	4'-6"
7'-6"	6"
12'	---
PER APPLICABLE CONDITIONS	

CURB, GUTTER WITH MONOLITHIC SIDEWALK

REVISION DATE	CITY OF MENDOTA		STD.DWG.
9-25-07	STREET TREE PLANTING		M-13
			1 OF 4



NOTES:

1. PROPERTY OWNERS, DEVELOPERS, CONTRACTORS, ENGINEERS & ARCHITECTS MAY PLANT ONLY THE TREES LISTED ON THE PARKWAY TREE LIST SEE DETAIL M-13 SHEET 2 OF 3.
2. FULL SPECIFICATIONS SHALL BE PROVIDED FOR CITY APPROVAL.

REVISION DATE		CITY OF MENDOTA	STD.DWG.
9-25-07			M-13
		STREET TREE PLANTING	2 OF 4

CITY OF MENDOTA PARKWAY TREE LIST

PROPERTY OWNERS MAY PLANT THE FOLLOWING TREES IN THE PARKWAY STRIP (BETWEEN THE PROPERTY LINE AND THE STREET PAVEMENT) UPON RECEIVING A PERMIT FROM THE LICENSE & PERMITS CLERK.

<u>NAME</u>	<u>COMMON NAME</u>
ALNUS RHOMBIFOLIA	WHITE ALDER
FRAXNUS OXYOARPA 'RAYWOOD'	CLARAT ASH
LIQUIDAMBAR STYRACIFLUA	PALO ALTO SWEET GUM
LIRIODENDRON TULIPIFERA	TULIP TREE
PISTACIA CHINENSIS	CHINESE PISTACIA (KEITH DAVEY)
PLANTANUS ACERIFOLIA	LONDON PLANE TREE
PODOCARPUS GARCILIOR	FERN PINE
PYRUS CALLERYANA 'BRADFORD'	BRADFORD PEAR
PYRUS CALLERYANA 'REDSPIRE'	FLOWERING PEAR
PYRUS KAWAKAMII	EVERGREEN PEAR
ULMUS PARVIFOLIA 'SEMPERVIRENS'	CHINESE EVERGREEN ELM
ULMUS PARVIFOLIA 'DRAKE'	CHINESE ELM
PRUNUS CERASIFERA 'KRAUTER VESUSVIUS'	FLOWERING PLUM
QUERCUS ILEX	HOLLY OAK

NOTE:

CITY ORDINANCE 12.16.050 PROHIBITED TREES:
IT IS UNLAWFUL TO PLANT IN ANY PUBLIC PARKING STRIP THE FOLLOWING TREES: ACACIA, BLACK WALNUT EUCALYPTUS, ELM, PLAM, POPLAR, TREE OF HEAVEN OR SYCAMORE. IT IS UNLAWFUL TO PLANT WILLOW, COTTONWOOD OR POPLAR TREES ANYWHERE IN THE CITY UNLESS THE SUPERINTENDENT OF PUBLIC WORKS APPROVES THE SITE AS ONE WHERE THE ROOTS WILL NOT INTERFERE WITH PUBLIC SEWER.

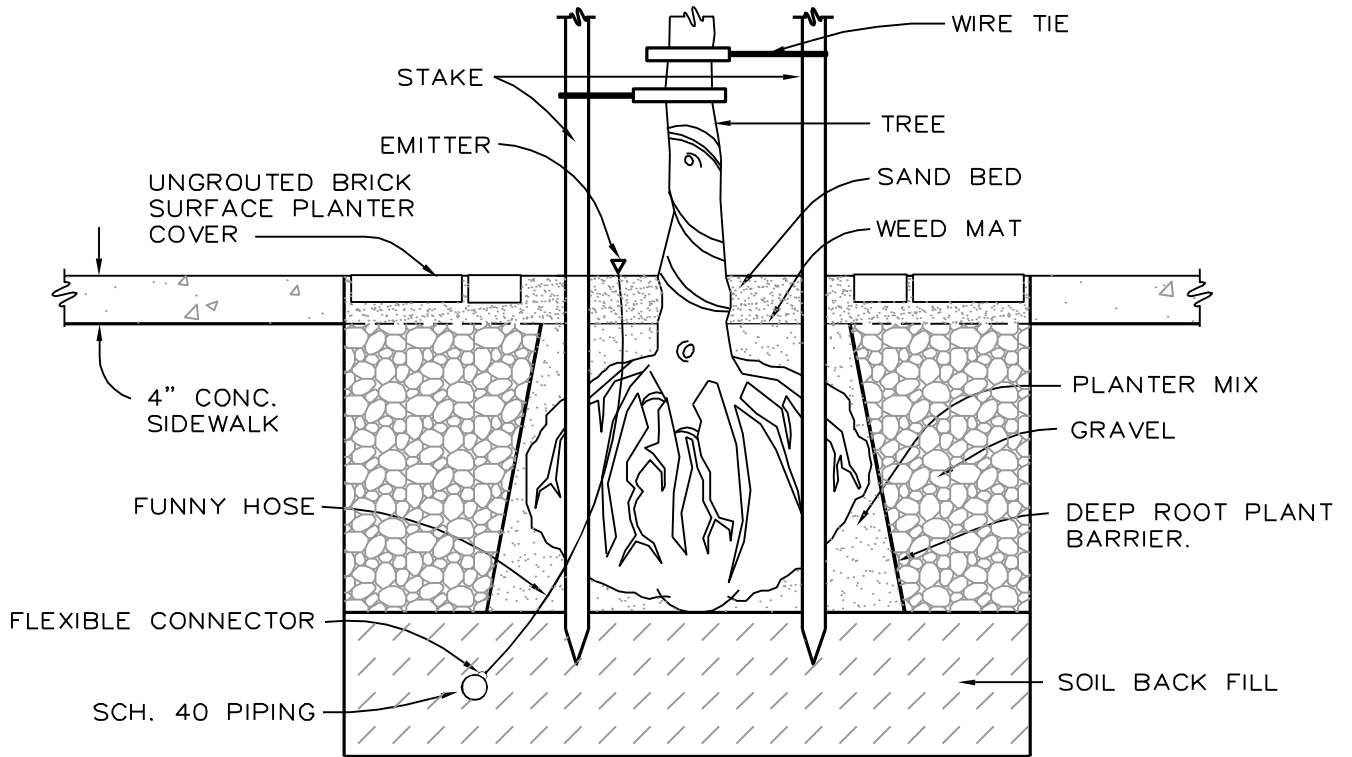
REVISION DATE	CITY OF MENDOTA	STD.DWG.
9-25-07	APPROVED TREE & SHRUB LIST	M-13 3 OF 4

CITY OF MENDOTA PARKWAY SHRUB LIST

PROPERTY OWNERS MAY PLANT THE FOLLOWING SHRUBS IN THE PARKWAY STRIP (BETWEEN THE PROPERTY LINE AND THE STREET PAVEMENT) UPON RECEIVING A PERMIT FROM THE LICENSE & PERMITS CLERK.

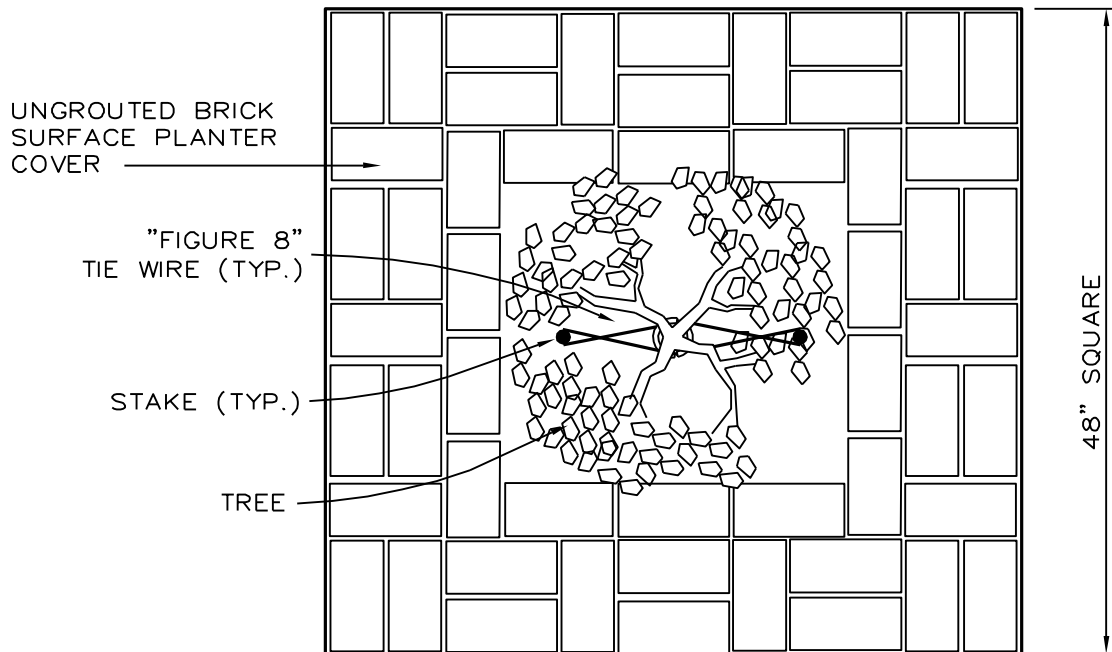
<u>NAME</u>	<u>COMMON NAME</u>
BERBERIS THUNBERGIL 'ROSE GLOW'	BARBERRY
COPROSMA PETRIEI 'VERDE VISTA'	MIRROR SHRUB
HEMEROCALLIS HYBRIDS 'STELLA D'ORO'	DAYLILLY
LANTANA HYBRID 'SPREADING YELLOW'	LANTANA
LEUCOPHYLLUM FRUTESCENS 'GREEN CLOUD'	TEXAS RANGER
LIGUSTRUM JAPONICA TEXANUM	WAX LEAF PRIVET
NANDINA DOMESTICA 'COMPACTA'	HEAVENLY BAMBOO
PENNISETURN SETACEUM 'RUBRUM'	FOUNTAIN GRASS
RHAPHIOLEPIS INDICA 'INDIAN PRINCESS'	INDIA HAWTHORN
SALVIA LEUCANTHA	MEXICAN SAGE
TRACHELOSPERMUM JASMINOLDES	STAR JASMINE
VIBURNUM TINUS 'SPRING BOUQUET'	LAURUSTINUS

REVISION DATE	CITY OF MENDOTA	STD.DWG.
9-25-07	APPROVED TREE & SHRUB LIST	M-13
		4 OF 4



NOTES:

1. SEE SPECIFICATIONS SECTION 26.
2. SEE TREE LIST Std. Dwg. M-13.
3. SEE TREE WELL Std. Dwg. M-13.



NOTE:

COMMON OR PAVING BRICK PLANTER COVER, REQUIRED ONLY IN COMMERCIAL AREAS OR WHERE SIDEWALK EXISTS. BRICK COVER PATTERN SHALL BE AS SHOWN ABOVE. ALTERNATIVES TO TO THE BRICK COVER WILL BE ACCEPTABLE WITH APPROVAL OF THE CITY.

REVISION DATE		CITY OF MENDOTA		STD.DWG.
9-25-07	05/24/06	COMMERCIAL TREE WELL WITH AUTOMATIC IRRIGATION SYSTEM		M-14