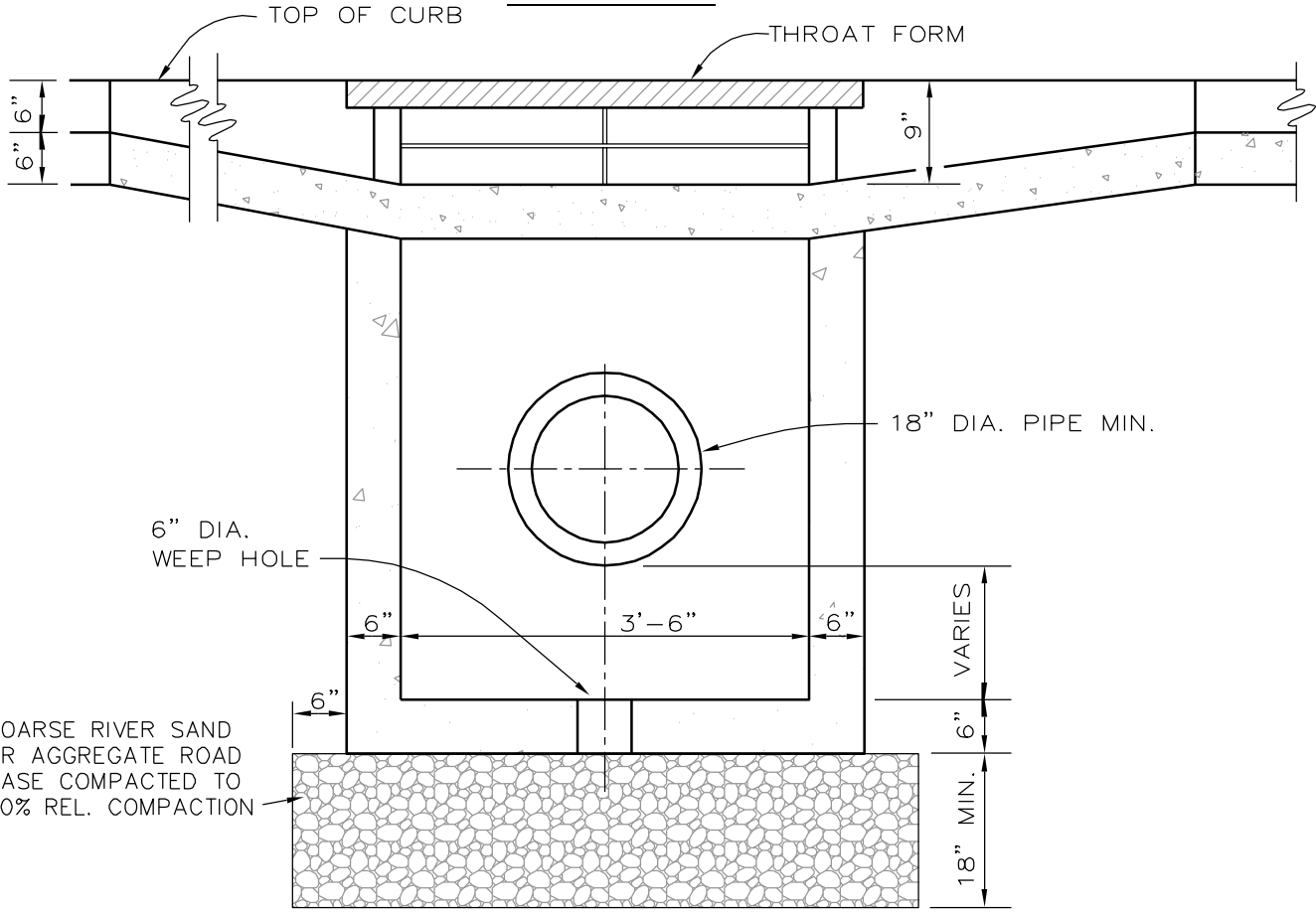
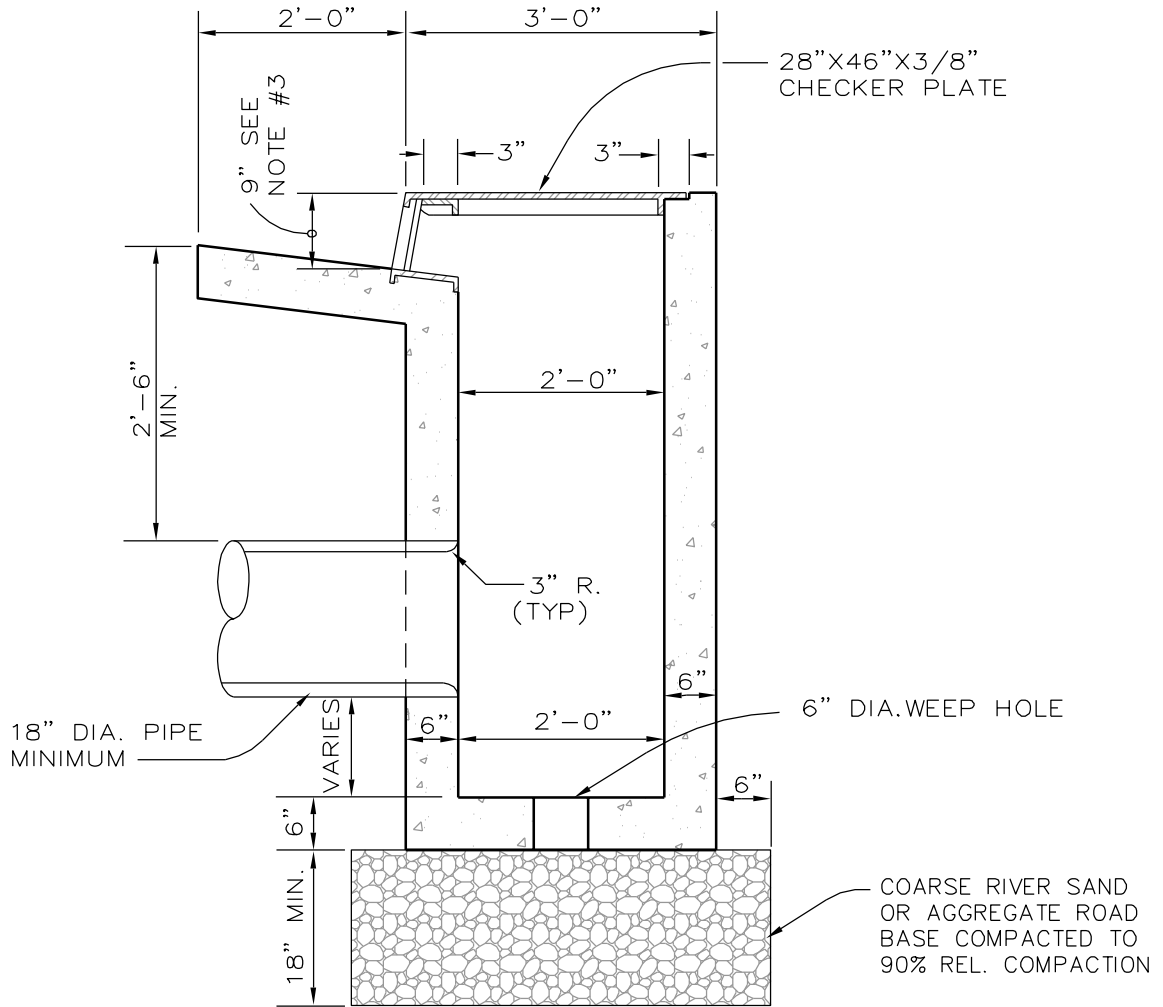


**PLAN VIEW**



**SECTION A-A**

REVISION DATE	CITY OF MENDOTA	STD. DWG.
	<b>CURB DRAIN INLET- OUTLET TYPE A</b>	<b>D-I</b> 1 OF 3

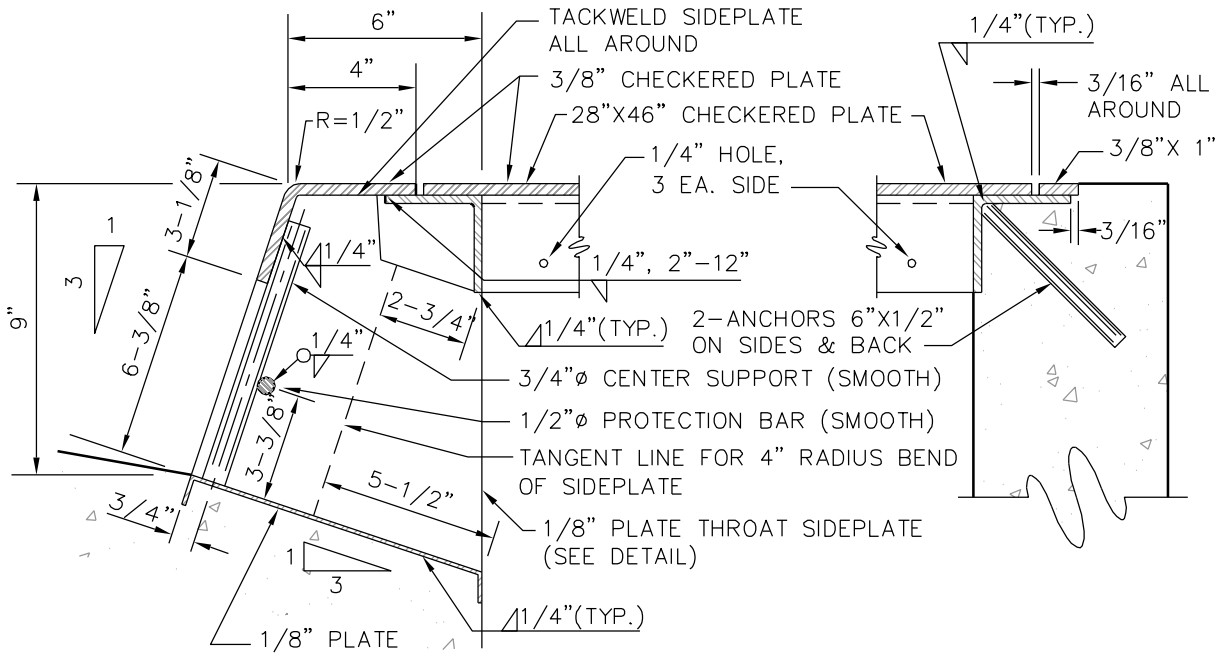


SECTION B-B

NOTES:

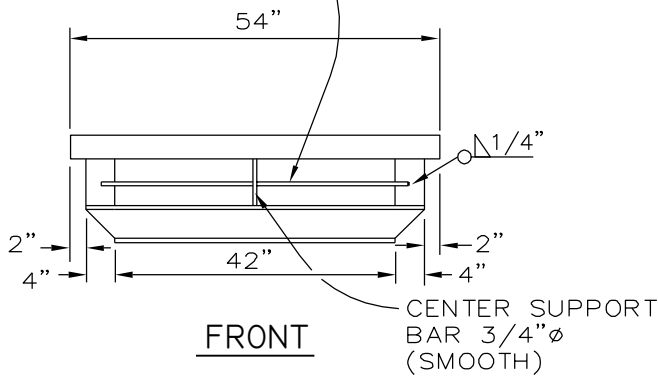
1. THE INLET MAY BE MODIFIED SLIGHTLY TO MATCH EXISTING IMPROVEMENTS, AS DIRECTED BY THE CITY ENGINEER.
2. STRUCTURE SHALL BE 6 SACK CONCRETE. EXPOSED SURFACES SHALL BE FINISHED TO MATCH CURB AND SIDEWALK FINISH.
3. WHEN EMPLOYED AS OUTLET, PLACE GUTTER 6" BELOW TOP OF CURB GRADE AND ELIMINATE 1/2" IRON ROD FROM THROAT FORM.
4. CURB AND GUTTER SHALL BE CONSTRUCTED OR RECONSTRUCTED ON EACH SIDE OF BOX AS REQUIRED.

REVISION DATE	CITY OF MENDOTA	STD. DWG.
	<b>CURB DRAIN INLET- OUTLET TYPE A</b>	<b>D-I</b>
		2 OF 3



1/2"  $\phi$  (SMOOTH)  
PROTECTION BAR  
SEE NOTE 3 SHEET 2

**SECTION A - A**

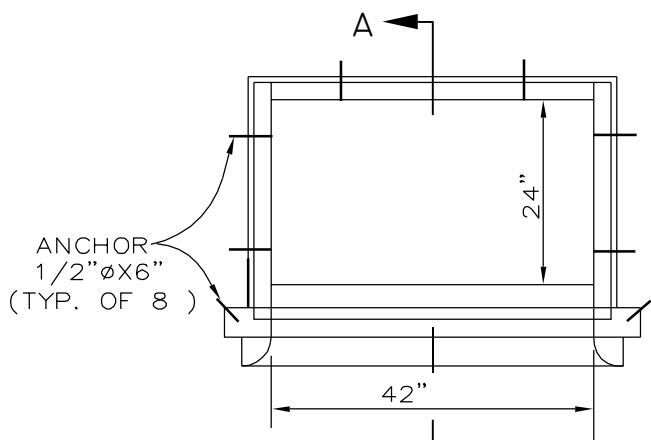


**FRONT**

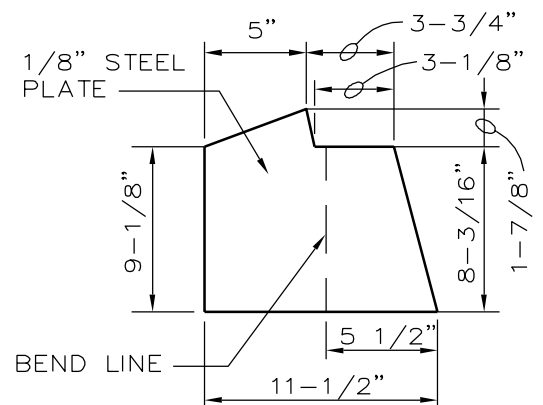
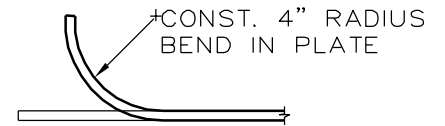
CENTER SUPPORT  
BAR 3/4"  $\phi$   
(SMOOTH)

**NOTES:**

1. ALL DIMENSIONS ARE FINISHED DIMENSIONS.
2. ALL PARTS SHALL BE STRUCTURAL GRADE STEEL.
3. ALL EXPOSED METAL PARTS SHALL BE PAINTED. METAL PARTS IN CONTACT WITH CONCRETE SHALL HAVE A COAL TAR EPOXY COATING.



**THROAT FORM & FRAME PLAN**



**SIDE PLATE**

REVISION DATE

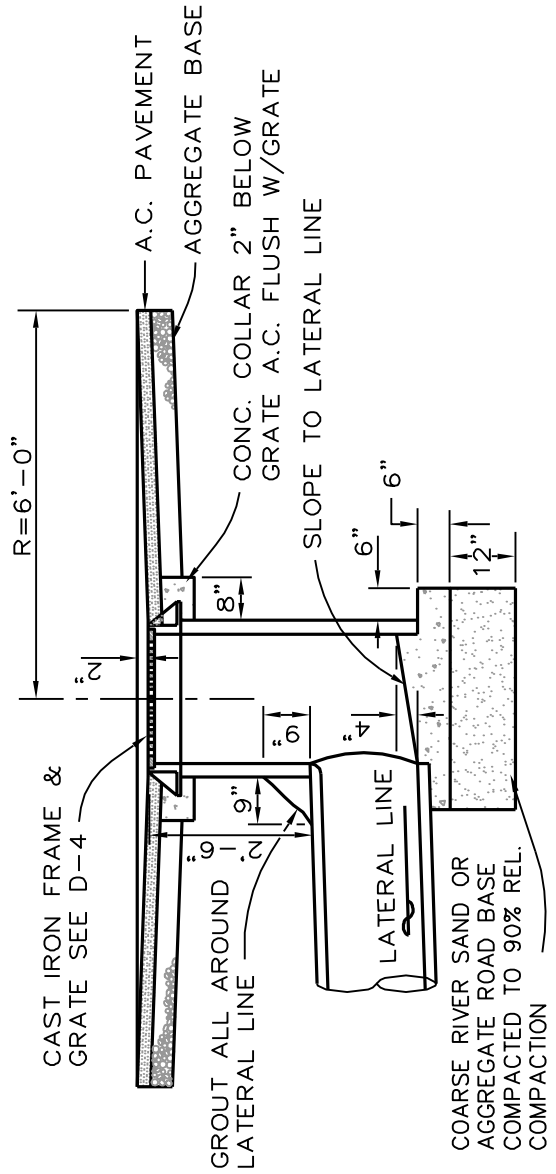
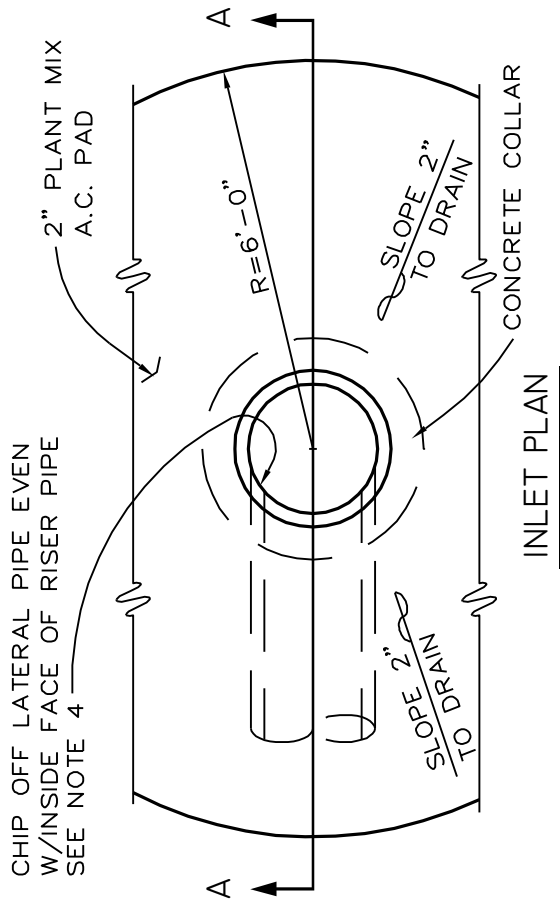
CITY OF MENDOTA

STD. DWG.

**CURB DRAIN INLET- OUTLET TYPE A**

**D-1**

3 OF 3



NOTES:

1. 24" CONCRETE RISER PIPE SHALL BE ASTM C-76, CLASS III, RCP.
2. BREAK OUT RISER PIPE AND CUT LATERAL LINE NEATLY ALONG JOINT. FILL JOINT SPACE WITH GROUT.
3. ALL CONCRETE SHALL BE 6 SACK.
4. AT THE CONTACT POINT BETWEEN THE LATERAL LINE AND THE INLET WALL A SMOOTH 3" RADIUS CURVE SHALL BE CONSTRUCTED.
5. FLOOR OF THE INLET SHALL SLOPE TO THE LATERAL LINE AND SHALL BE GIVEN A STEEL TROWELLED FINISH.

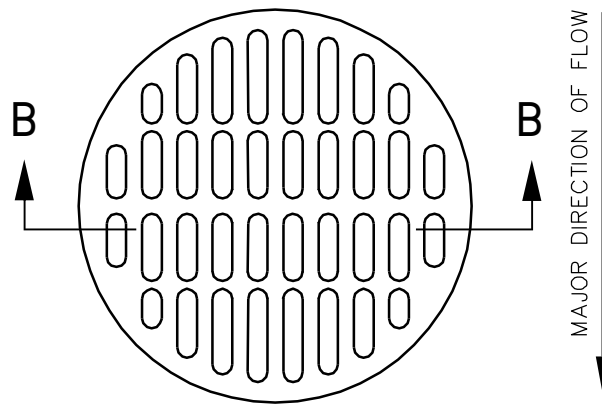
REVISION	DATE

CITY OF MENDOTA

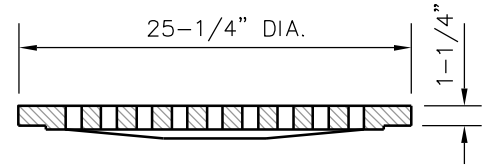
DRAIN INLET-OUTLET TYPE B

STD.DWG.

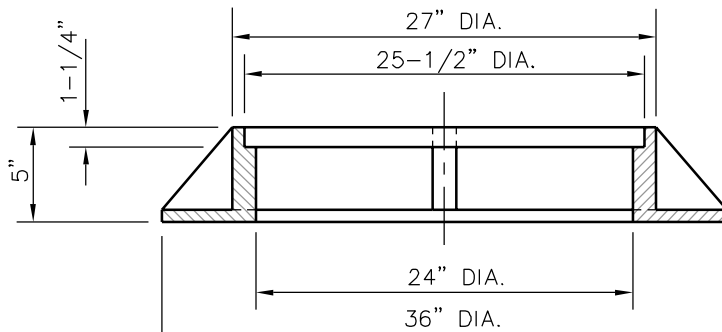
D-2



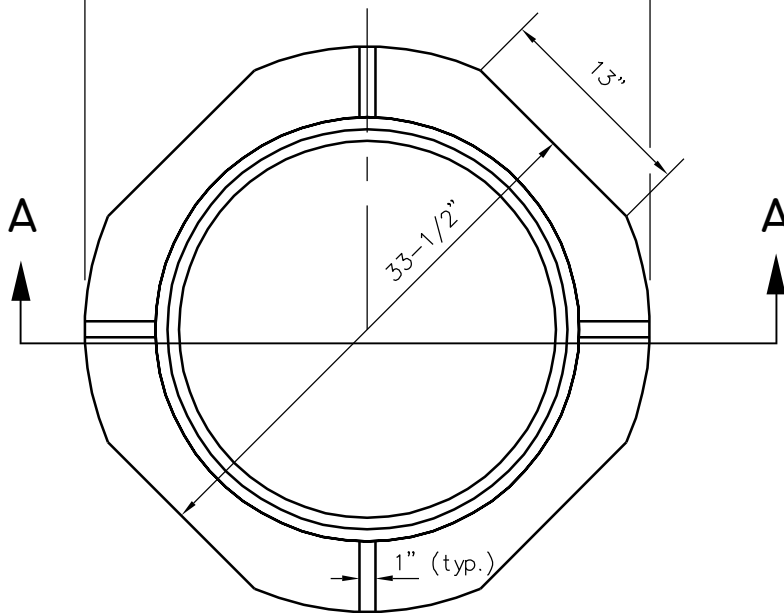
DRAIN INLET GRATE



SECTION B - B



SECTION A - A

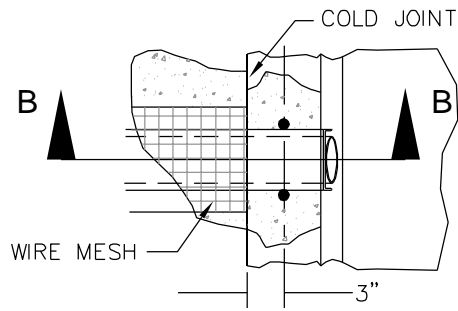


DRAIN INLET FRAME

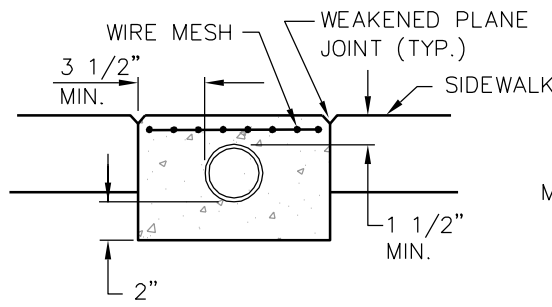
NOTES:

1. ALL DIMENSIONS ARE FINISHED DIMENSIONS.
2. FRAME & GRATE SHALL BE CAST IRON.
3. GRATE SHALL BE INSTALLED SUCH THAT THE SLOTS ARE PARALLEL TO MAJOR DIRECTION OF DRAINAGE FLOW.
4. DRAIN INLET FRAME AND GRATE SHALL BE SOUTH BAY FOUNDARY, GRATE & FRAME C7, SBF 1000 OR APPROVED EQUAL.

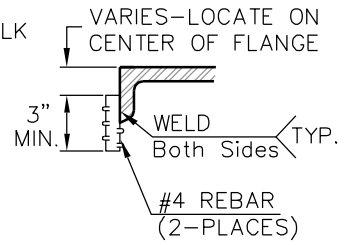
REVISION DATE	CITY OF MENDOTA	STD.DWG.
	<b>DRAIN INLET FRAME &amp; GRATE</b>	<b>D-3</b>



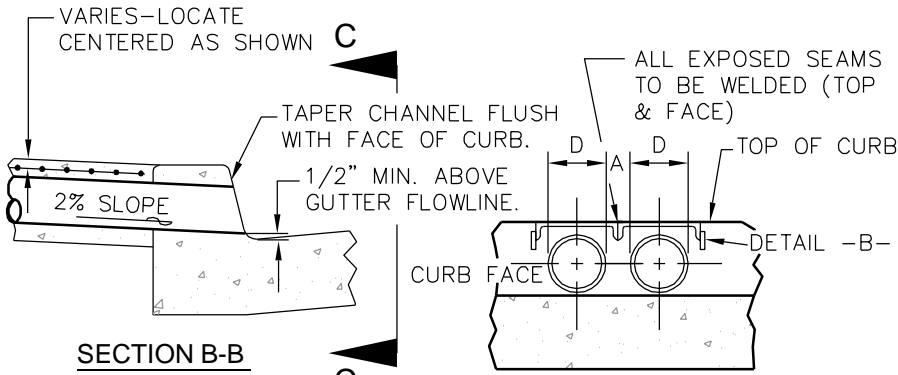
**DETAIL -A-**



**SECTION A-A**



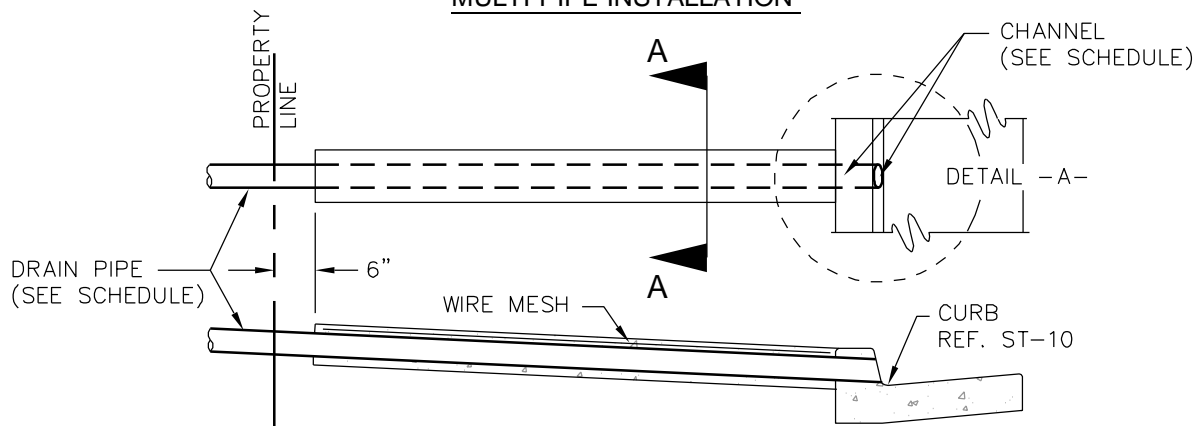
**DETAIL -B-**



**SECTION B-B**

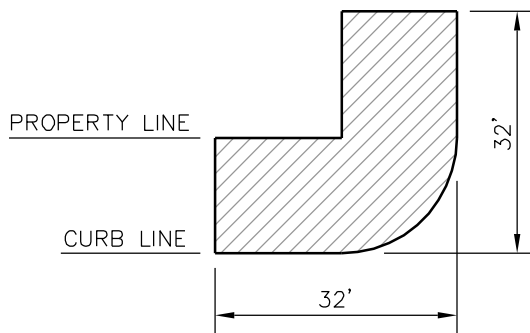
**SECTION C-C**

**MULTI-PIPE INSTALLATION**



**NOTES:**

1. PIPE SHALL BE ONE CONTINUOUS LENGTH FROM PROPERTY LINE TO CURB LINE.
2. MULTIPLE PIPES TO BE SET A MIN. DISTANCE OF D/2 APART.
3. CONCRETE SHALL BE 6 SACK.
4. PIPE SHALL BE CIRCULAR DUCTILE IRON OR RIGID PLASTIC.
5. WIRE MESH TO BE INSTALLED IN CONCRETE ABOVE DRAIN LINE.
6. SEE ST-12B FOR SUBGRADE REQUIREMENTS UNDER SIDEWALK



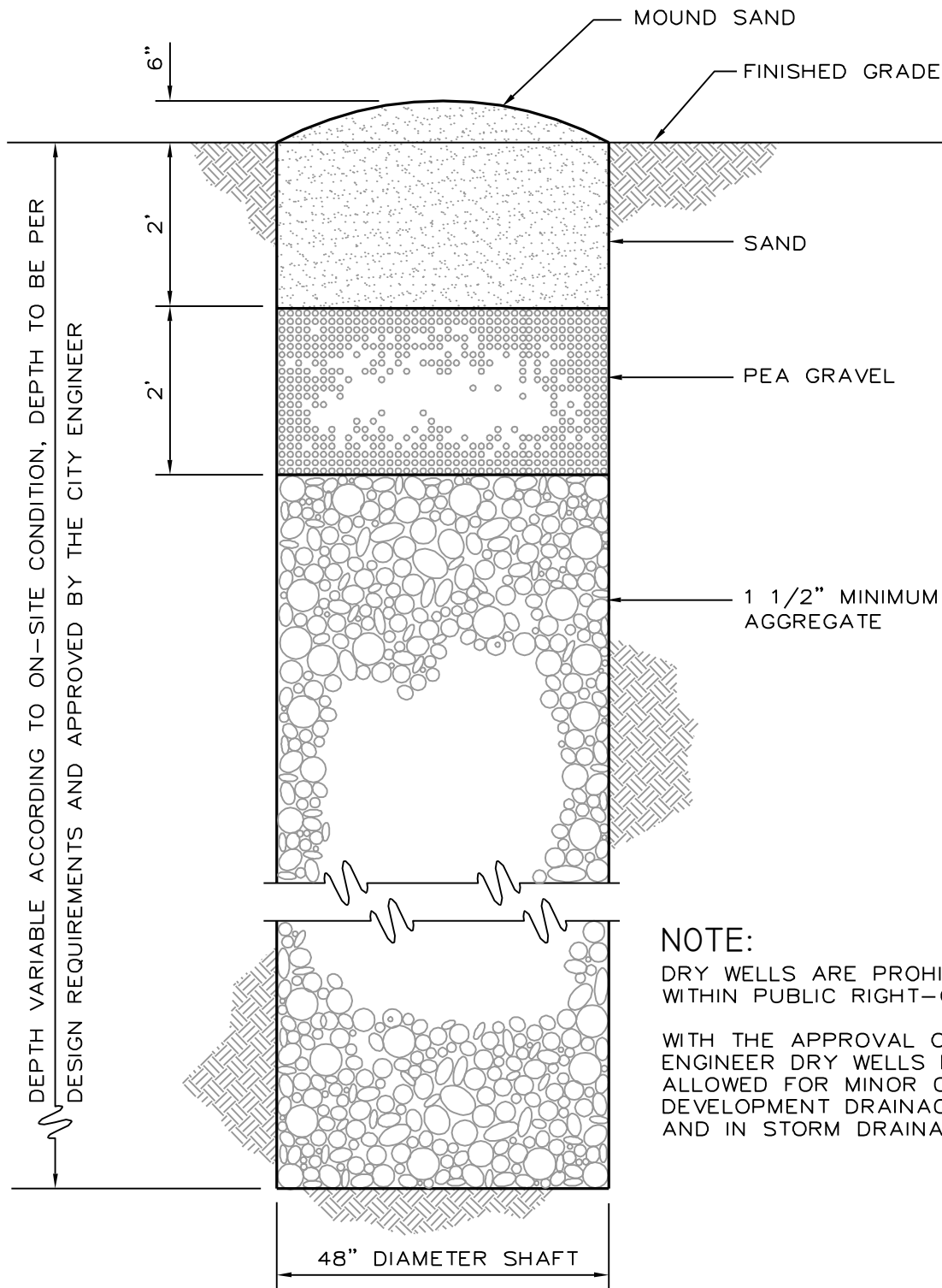
DRAIN SHALL NOT OCCUPY THE HATCHED AREA.

**BLOCK CORNER**

SCHEDULE		
PIPE DIA.	CURB FACE	CHANNEL
3"	6" TO 8"	6"
4"	6" TO 8"	6"
6"	8" TO 10"	8"

CHANNEL MATERIAL TO BE STD. GALV. OR EQUIV., UNLESS OTHERWISE APPROVED BY CITY ENGINEER.

REVISION DATE	CITY OF MENDOTA		Std. Dwg.
9-26-07	SIDEWALK UNDERDRAIN PIPE		D-4
6-23-09			

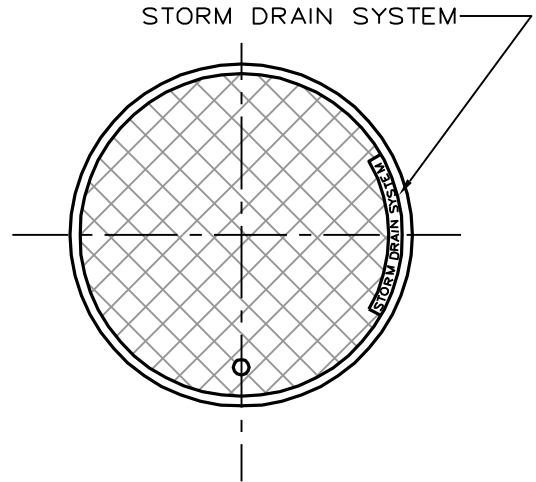
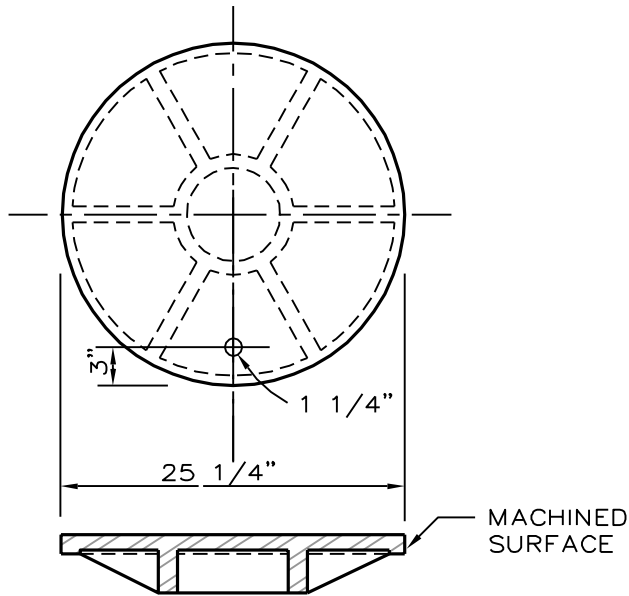


**NOTE:**

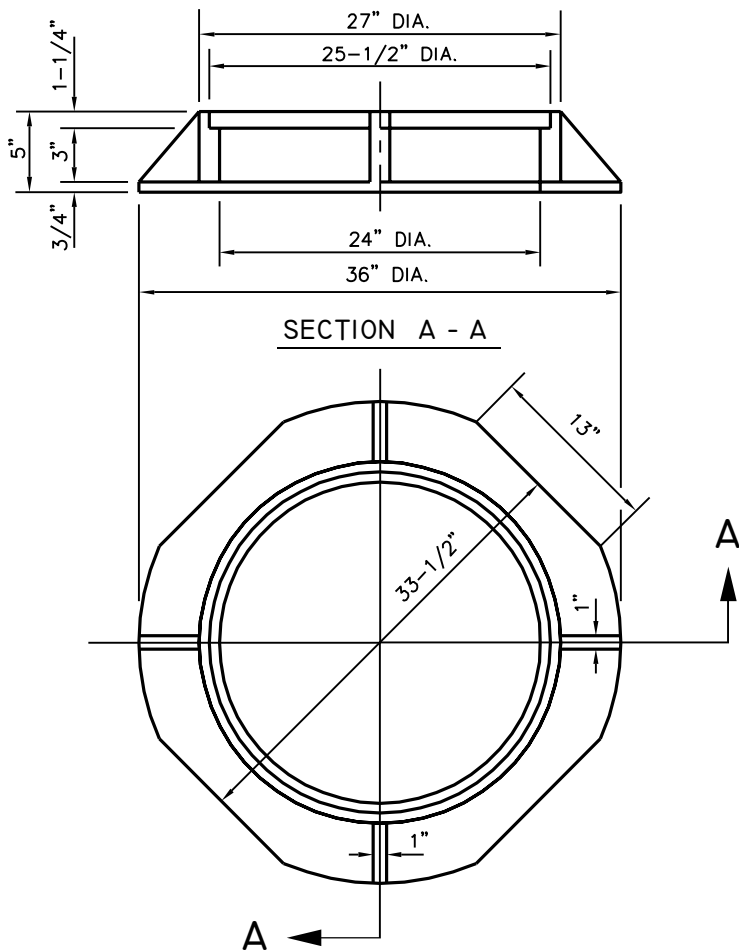
DRY WELLS ARE PROHIBITED WITHIN PUBLIC RIGHT-OF-WAY.

WITH THE APPROVAL OF THE CITY ENGINEER DRY WELLS MAY BE ALLOWED FOR MINOR ON-SITE DEVELOPMENT DRAINAGE AREAS AND IN STORM DRAINAGE BASINS.

REVISION DATE	CITY OF MENDOTA	STD.DWG.
	STANDARD DRYWELL	D-5



MANHOLE COVER



MANHOLE FRAME

NOTES:

1. ALL DIMENSIONS ARE FINISHED DIMENSIONS.
2. FRAME & GRATE SHALL BE CAST IRON.
3. FRAME AND COVER SHALL BE SOUTH BAY FOUNDRY A62 SBF 1000 OR APPROVED EQUAL.

SET WEIGHT

COVER-	155 LBS.
FRAME-	165 LBS.
TOTAL	320 LBS.

REVISION DATE	CITY OF MENDOTA	STD.DWG.
	STORM DRAIN MANHOLE	
	FRAME & COVER	D-6